

October 12, 2020

Views of COVID-19 in Wyoming – 10/6/20

A snapshot survey of Wyoming residents

October 6th, 2020

This WyoSpeaks survey of Wyoming citizens was conducted over the course of 24 hours beginning on October 6 at 7:00 AM. The survey is designed to gauge public opinion on a number of topics related to COVID-19 (Coronavirus) and approval ratings for how the president, congress, our governor, and local officials are handling the crisis. This is the ninth iteration of our COVID-19 tracking survey, which will be fielded at regular intervals to collect information about the changing views of Wyoming residents over time.

Methodology

This brief presents the results of the ninth of multiple surveys planned in 2020 to measure public opinion on a number of topics related to COVID-19 (Coronavirus) and approval ratings for how government officials are handling the related crisis.

The survey was conducted among a randomly selected sample of Wyoming residents who are members of the Wyoming Survey & Analysis Center's (WYSAC) WyoSpeaks panel of Wyoming citizens.

The survey was conducted online for 24 hours, with the first email invitations sent to the selected respondents at 7:00 AM on October 6th, 2020. A total of 1355 WyoSpeaks panel members were drawn into the survey sample; 505 completed

By

Brian Harnisch, MBA, Senior Research Scientist

harnisch@uwyo.edu

With the assistance of

Bistra Anatchkova, PhD, Survey Research Center Manager

bistra@uwyo.edu

Wyoming Survey & Analysis Center
University of Wyoming
1000 E. University Ave, Dept. 3925
Laramie, Wyoming 82071
307.766.2189 | wysac@uwyo.edu
www.uwyo.edu/wysac

the survey. When factoring in bad email addresses and quota screen outs, we are left with a response rate of 42%.

The survey instrument contains questions developed internally, as well as questions included in the Great Lakes Poll, fielded by Baldwin Wallace University.

The survey implemented a quota for age, with the quota sizes based on data from the 2013-2017 American Community Survey 5-year estimates. The quota approach was used to maximize the representativeness of the initial survey responses so that less data weighting was required after data collection closed.

The survey results are weighted by gender, age, and respondent' county. The overall margin of error for questions asked of all respondents is ± 4.4 percentage points. Total column percentages may not add to 100% due to rounding error. This project is funded internally by WYSAC.

About WyoSpeaks

The mission of WyoSpeaks is to give voice to Wyoming citizens on important issues facing our state and make public policy more responsive to the opinions of our citizens.

WYSAC's WyoSpeaks survey panel uses probability-based sampling methods to monitor the perspectives of Wyoming citizens through online surveys. WyoSpeaks surveys allow researchers to draw statistically valid inferences about the state as a whole. Over the course of a year, the Wyoming Survey & Analysis Center conducts a number of state-wide telephone surveys where all Wyoming residents have an equal probability of selection. During these surveys, respondents are given the opportunity to join the WyoSpeaks panel of Wyoming citizens. The only way to be added to the WyoSpeaks panel is through this random selection process. WyoSpeaks offers researchers, agencies, and organizations a cost-effective alternative to focus groups and robust telephone and mail surveys with a quick turnaround of statistically valid and reliable results.

For more information about pricing and getting your questions answered by the WyoSpeaks panel members, please email us at wysac.src@uwo.edu.

Questions and Survey Results

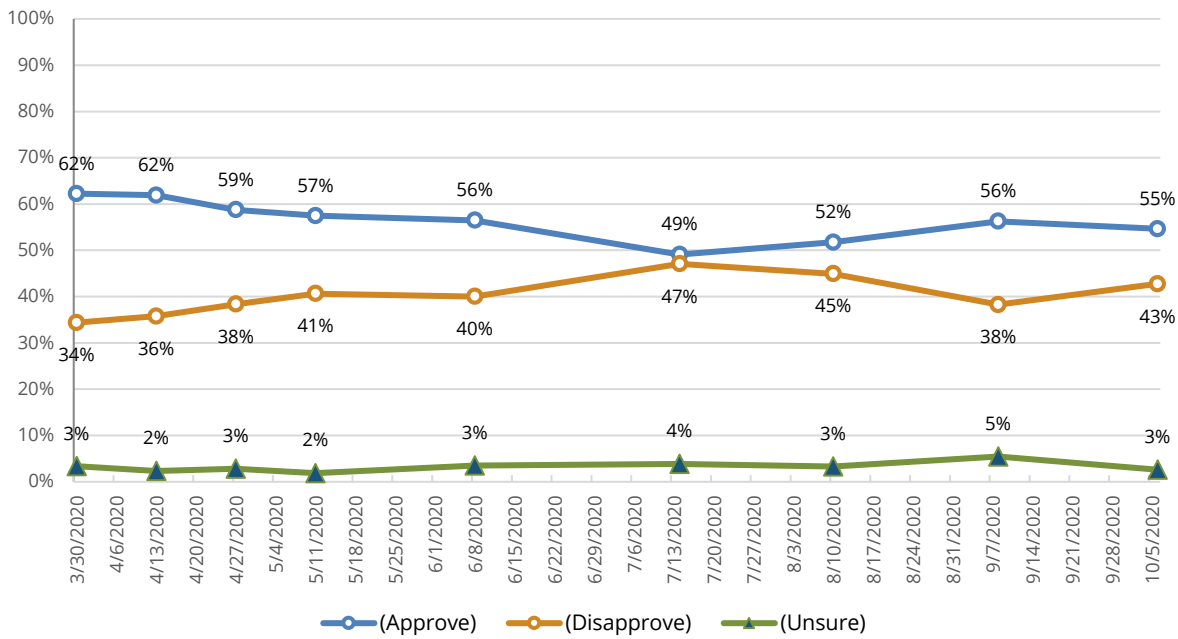
Q2 Do you approve or disapprove of the way President Donald Trump is handling COVID-19 (coronavirus)?

| | 3/30 | 4/13 | 4/27 | 5/11 | 6/8 | 7/14 | 8/10 | 9/8 | 10/6 | 9/8-10/6 Change |
|---------------------|-------|-------|-------|-------|-------|-------|-------|-------|-------|-----------------|
| Strongly Approve | 36.2 | 31.0 | 28.9 | 23.4 | 30.1 | 22.8 | 22.0 | 29.5 | 29.7 | +0.1 |
| Somewhat Approve | 26.0 | 30.9 | 29.8 | 34.0 | 26.4 | 26.3 | 29.8 | 26.8 | 24.8 | -1.9 |
| Somewhat Disapprove | 10.3 | 8.2 | 9.1 | 8.8 | 8.5 | 10.1 | 9.0 | 7.0 | 8.9 | +1.8 |
| Strongly Disapprove | 24.0 | 27.6 | 29.1 | 31.9 | 31.4 | 37.0 | 36.0 | 31.1 | 33.9 | +2.8 |
| Unsure | 3.5 | 2.2 | 2.9 | 1.9 | 3.6 | 3.8 | 3.2 | 5.5 | 2.6 | -2.8 |
| Total | 100.0 | 100.0 | 100.0 | 100.0 | 100.0 | 100.0 | 100.0 | 100.0 | 100.0 | +0.0 |
| Net Approval* | +28.0 | +26.1 | +20.5 | +16.8 | +16.5 | +2.0 | +6.9 | +18.1 | +11.7 | |

*Net approval = (% approve - % disapprove)

Figure 1

Do you approve or disapprove of the way President Donald Trump is handling COVID-19 (coronavirus)?



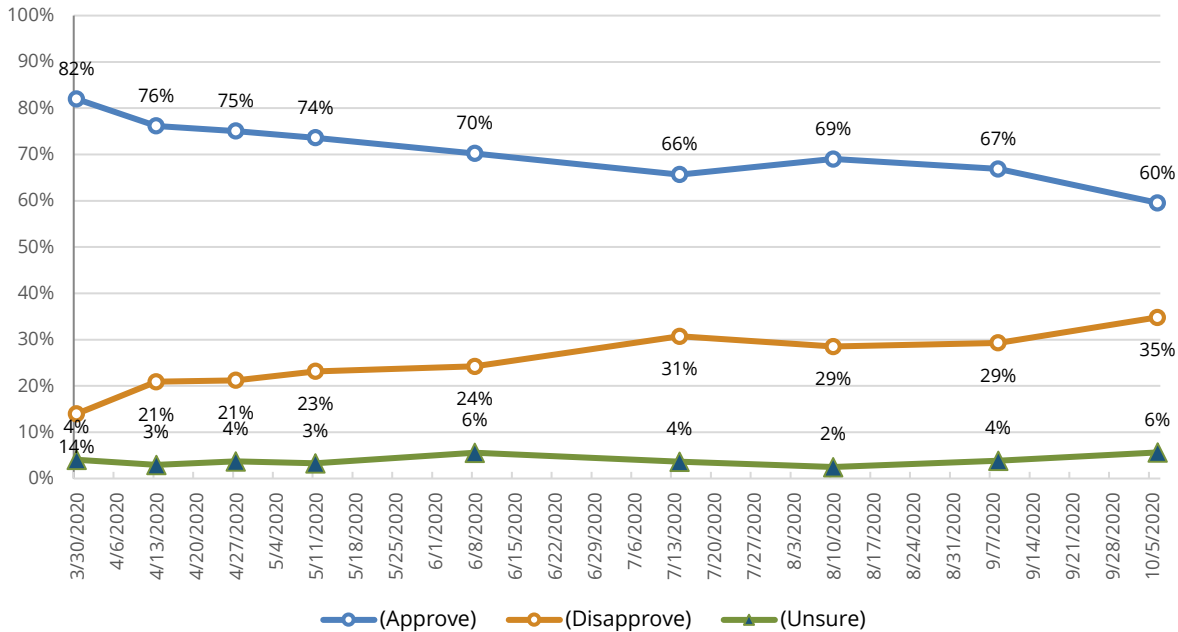
Q4 Do you approve or disapprove of the way Governor Mark Gordon is handling COVID-19 (coronavirus)?

| | 3/30 | 4/13 | 4/27 | 5/11 | 6/8 | 7/14 | 8/10 | 9/8 | 10/6 | 9/8-10/6 Change |
|---------------------|-------|-------|-------|-------|-------|-------|-------|-------|-------|-----------------|
| Strongly Approve | 36.3 | 31.3 | 31.2 | 24.4 | 26.2 | 23.0 | 19.1 | 20.4 | 17.9 | -2.5 |
| Somewhat Approve | 45.6 | 44.8 | 43.8 | 49.1 | 43.9 | 42.6 | 49.9 | 46.5 | 41.6 | -4.8 |
| Somewhat Disapprove | 10.5 | 14.9 | 15.9 | 17.6 | 18.7 | 21.6 | 22.0 | 19.7 | 23.3 | +3.7 |
| Strongly Disapprove | 3.6 | 5.9 | 5.3 | 5.6 | 5.6 | 9.2 | 6.5 | 9.7 | 11.5 | +1.8 |
| Unsure | 4.0 | 3.1 | 3.7 | 3.2 | 5.6 | 3.6 | 2.5 | 3.8 | 5.6 | +1.8 |
| Total | 100.0 | 100.0 | 100.0 | 100.0 | 100.0 | 100.0 | 100.0 | 100.0 | 100.0 | +0.0 |
| Net Approval* | +67.9 | +55.3 | +53.9 | +50.4 | +45.8 | +34.8 | +40.4 | +37.6 | +24.7 | |

*Net approval = (% approve - % disapprove)

Figure 2

Do you approve or disapprove of the way Governor Mark Gordon is handling COVID-19 (coronavirus)?



WYOMING SURVEY & ANALYSIS CENTER

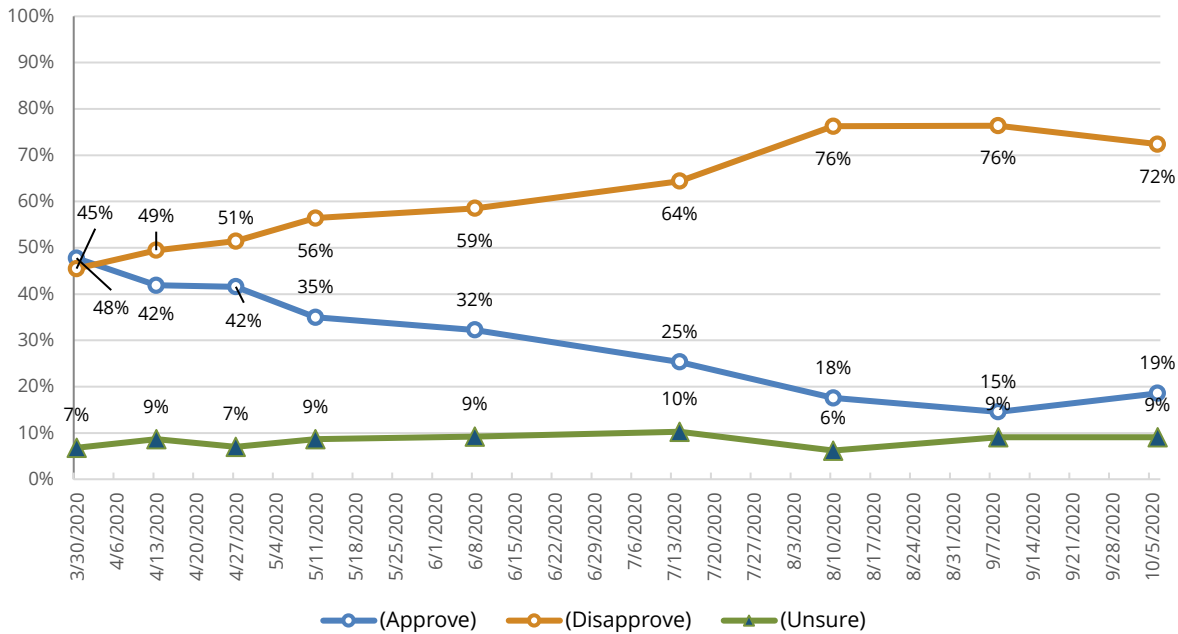
Q5 Do you approve or disapprove of the way Congress is handling COVID-19 (coronavirus)?

| | 3/30 | 4/13 | 4/27 | 5/11 | 6/8 | 7/14 | 8/10 | 9/8 | 10/6 | 9/8-10/6 Change |
|---------------------|-------|-------|-------|-------|-------|-------|-------|-------|-------|-----------------|
| Strongly Approve | 6.3 | 3.8 | 3.2 | 2.2 | 3.0 | 0.9 | 2.0 | 1.7 | 2.4 | +0.8 |
| Somewhat Approve | 41.3 | 38.1 | 38.3 | 32.8 | 29.3 | 24.5 | 15.5 | 12.9 | 16.1 | +3.2 |
| Somewhat Disapprove | 30.2 | 32.7 | 33.5 | 30.7 | 34.9 | 33.3 | 34.9 | 34.9 | 35.5 | +0.5 |
| Strongly Disapprove | 15.3 | 16.8 | 17.9 | 25.7 | 23.6 | 31.1 | 41.3 | 41.5 | 36.9 | -4.5 |
| Unsure | 6.8 | 8.6 | 7.0 | 8.6 | 9.3 | 10.2 | 6.3 | 9.0 | 9.1 | +0.0 |
| Total | 100.0 | 100.0 | 100.0 | 100.0 | 100.0 | 100.0 | 100.0 | 100.0 | 100.0 | +0.0 |
| Net Approval* | +2.2 | -7.6 | -9.8 | -21.5 | -26.2 | -39.0 | -58.6 | -61.9 | -53.8 | |

*Net approval = (% approve - % disapprove)

Figure 3

Do you approve or disapprove of the way Congress is handling COVID-19 (coronavirus)?



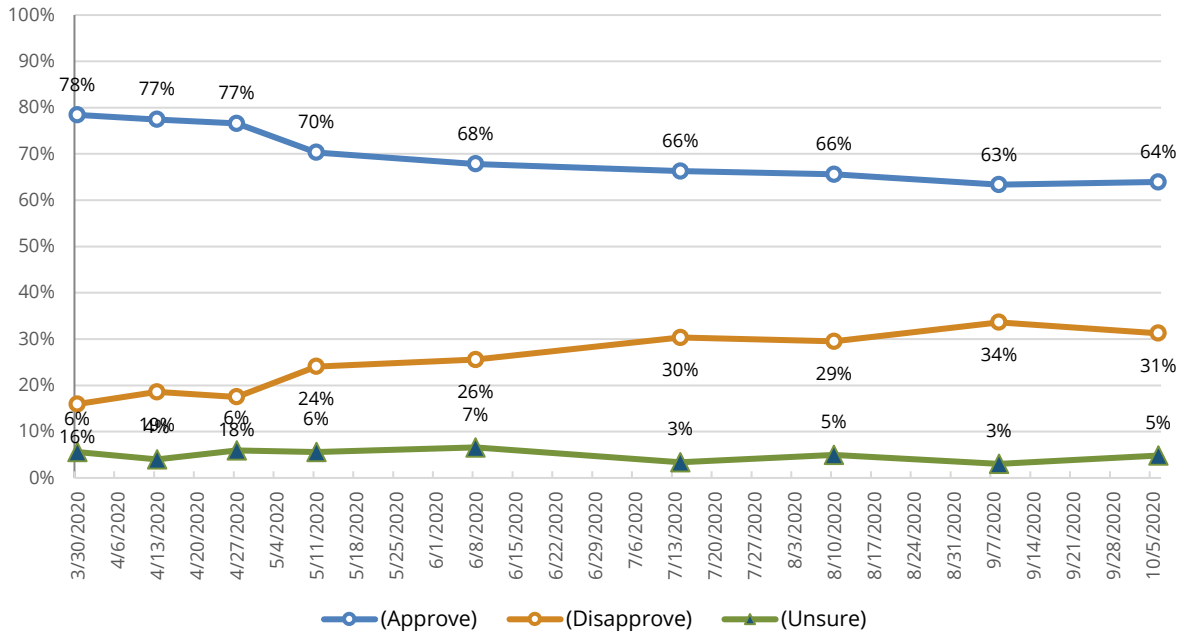
Q10 Do you approve or disapprove of the way your local government and health officials are handling COVID-19 (coronavirus)?

| | 3/30 | 4/13 | 4/27 | 5/11 | 6/8 | 7/14 | 8/10 | 9/8 | 10/6 | 9/8-10/6 Change |
|---------------------|-------|-------|-------|-------|-------|-------|-------|-------|-------|-----------------|
| Strongly Approve | 36.3 | 30.9 | 28.9 | 21.7 | 22.6 | 22.4 | 15.6 | 19.3 | 15.7 | -3.5 |
| Somewhat Approve | 42.1 | 46.5 | 47.8 | 48.6 | 45.3 | 43.7 | 50.1 | 44.1 | 48.2 | +4.0 |
| Somewhat Disapprove | 12.3 | 15.3 | 11.6 | 16.7 | 16.2 | 20.6 | 20.4 | 23.6 | 20.8 | -2.8 |
| Strongly Disapprove | 3.6 | 3.2 | 5.9 | 7.3 | 9.4 | 9.8 | 9.0 | 10.0 | 10.5 | +0.5 |
| Unsure | 5.6 | 4.1 | 5.8 | 5.6 | 6.5 | 3.5 | 4.9 | 3.1 | 4.8 | +1.8 |
| Total | 100.0 | 100.0 | 100.0 | 100.0 | 100.0 | 100.0 | 100.0 | 100.0 | 100.0 | +0.0 |
| Net Approval* | +62.5 | +58.8 | +59.2 | +46.3 | +42.3 | +35.8 | +36.3 | +29.9 | +32.7 | |

*Net approval = (% approve - % disapprove)

Figure 4

Do you approve or disapprove of the way your local government and health officials are handling COVID-19 (coronavirus)?

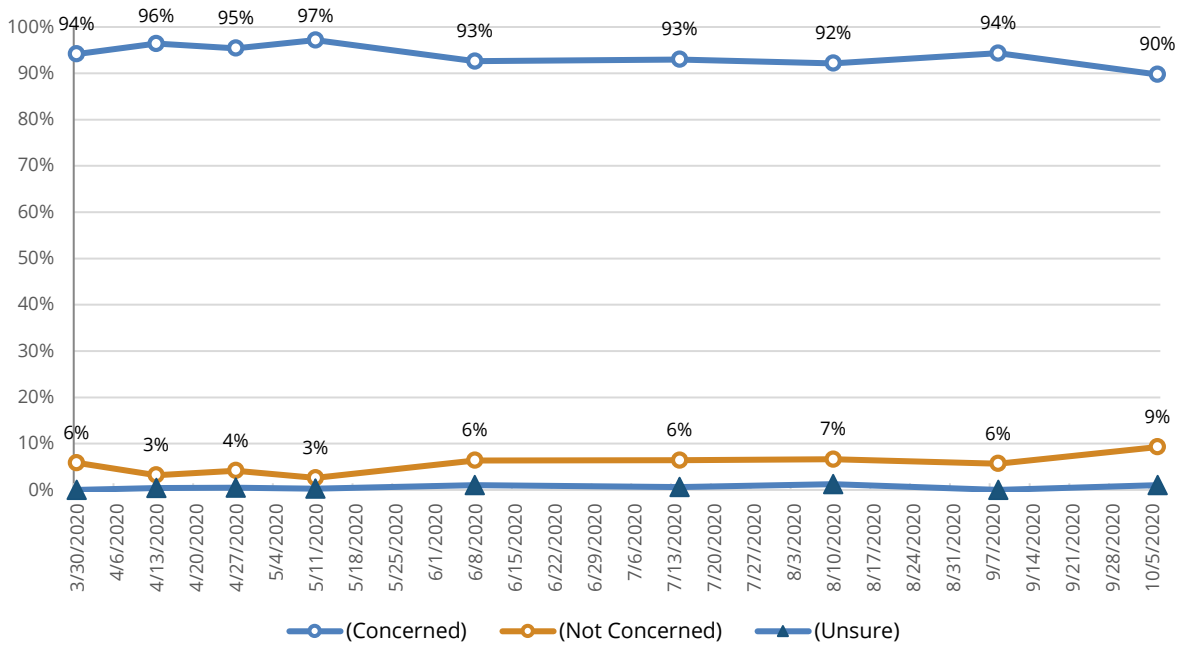


Q6 How concerned are you about the impact of COVID-19 (coronavirus) on the economy – if at all?

| | 3/30 | 4/13 | 4/27 | 5/11 | 6/8 | 7/14 | 8/10 | 9/8 | 10/6 | 9/8-10/6 Change |
|----------------------|-------|-------|-------|-------|-------|-------|-------|-------|-------|-----------------|
| Very concerned | 71.4 | 74.3 | 76.4 | 72.9 | 67.6 | 68.9 | 67.3 | 64.1 | 57.9 | -6.3 |
| Somewhat concerned | 22.7 | 22.1 | 18.9 | 24.1 | 25.0 | 24.1 | 25.0 | 30.4 | 32.1 | +1.7 |
| Not too concerned | 4.6 | 2.7 | 2.9 | 2.1 | 4.3 | 4.8 | 5.1 | 3.5 | 7.5 | +4.0 |
| Not at all concerned | 1.1 | 0.6 | 1.3 | 0.5 | 2.0 | 1.6 | 1.4 | 2.1 | 1.6 | -0.4 |
| Unsure | 0.1 | 0.4 | 0.5 | 0.3 | 1.0 | 0.5 | 1.2 | 0.0 | 1.0 | +1.0 |
| Total | 100.0 | 100.0 | 100.0 | 100.0 | 100.0 | 100.0 | 100.0 | 100.0 | 100.0 | |

Figure 5

How concerned are you about the impact of COVID-19 (coronavirus) on the economy – if at all?

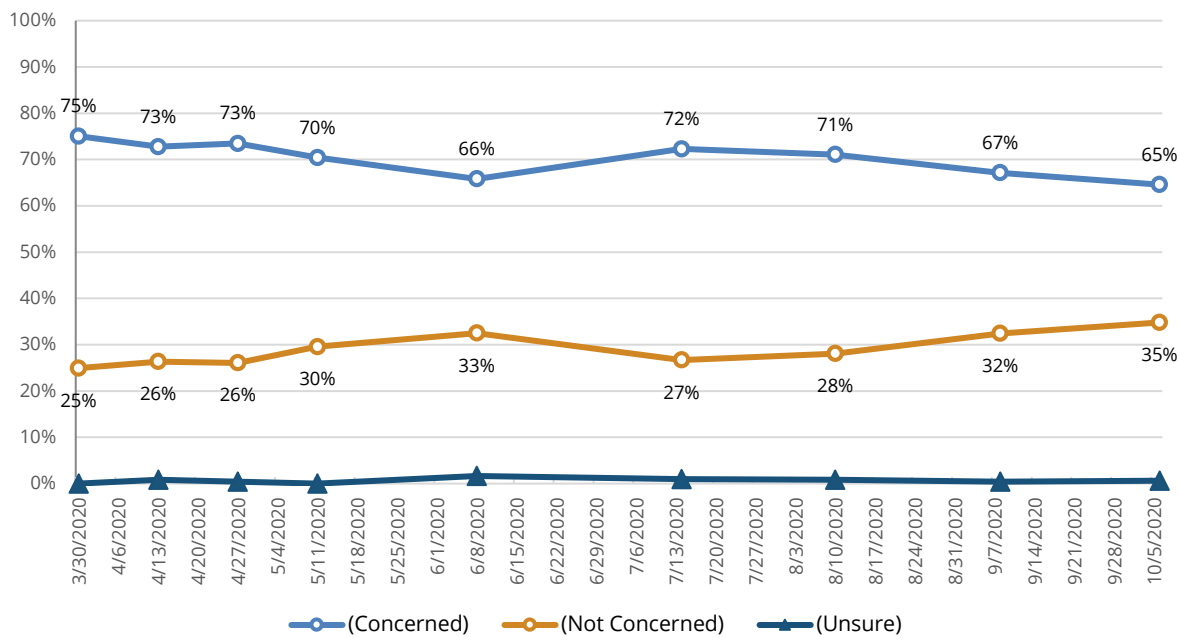


Q7 How concerned are you about the impact of COVID-19 (coronavirus) on your personal finances – if at all?

| | 3/30 | 4/13 | 4/27 | 5/11 | 6/8 | 7/14 | 8/10 | 9/8 | 10/6 | 9/8-10/6 Change |
|----------------------|-------|-------|-------|-------|-------|-------|-------|-------|-------|-----------------|
| Very concerned | 35.4 | 30.6 | 29.1 | 29.1 | 29.5 | 30.2 | 30.1 | 25.8 | 22.5 | -3.2 |
| Somewhat concerned | 39.6 | 42.2 | 44.3 | 41.4 | 36.4 | 42.0 | 40.9 | 41.4 | 42.1 | +0.7 |
| Not too concerned | 19.9 | 20.4 | 18.8 | 21.9 | 24.8 | 18.5 | 19.7 | 23.3 | 22.9 | -0.4 |
| Not at all concerned | 5.0 | 6.0 | 7.2 | 7.6 | 7.6 | 8.2 | 8.5 | 9.1 | 11.9 | +2.7 |
| Unsure | 0.1 | 0.8 | 0.5 | 0.0 | 1.7 | 1.1 | 0.9 | 0.4 | 0.6 | +0.2 |
| Total | 100.0 | 100.0 | 100.0 | 100.0 | 100.0 | 100.0 | 100.0 | 100.0 | 100.0 | |

Figure 6

How concerned are you about the impact of COVID-19 (coronavirus) on your personal finances – if at all?

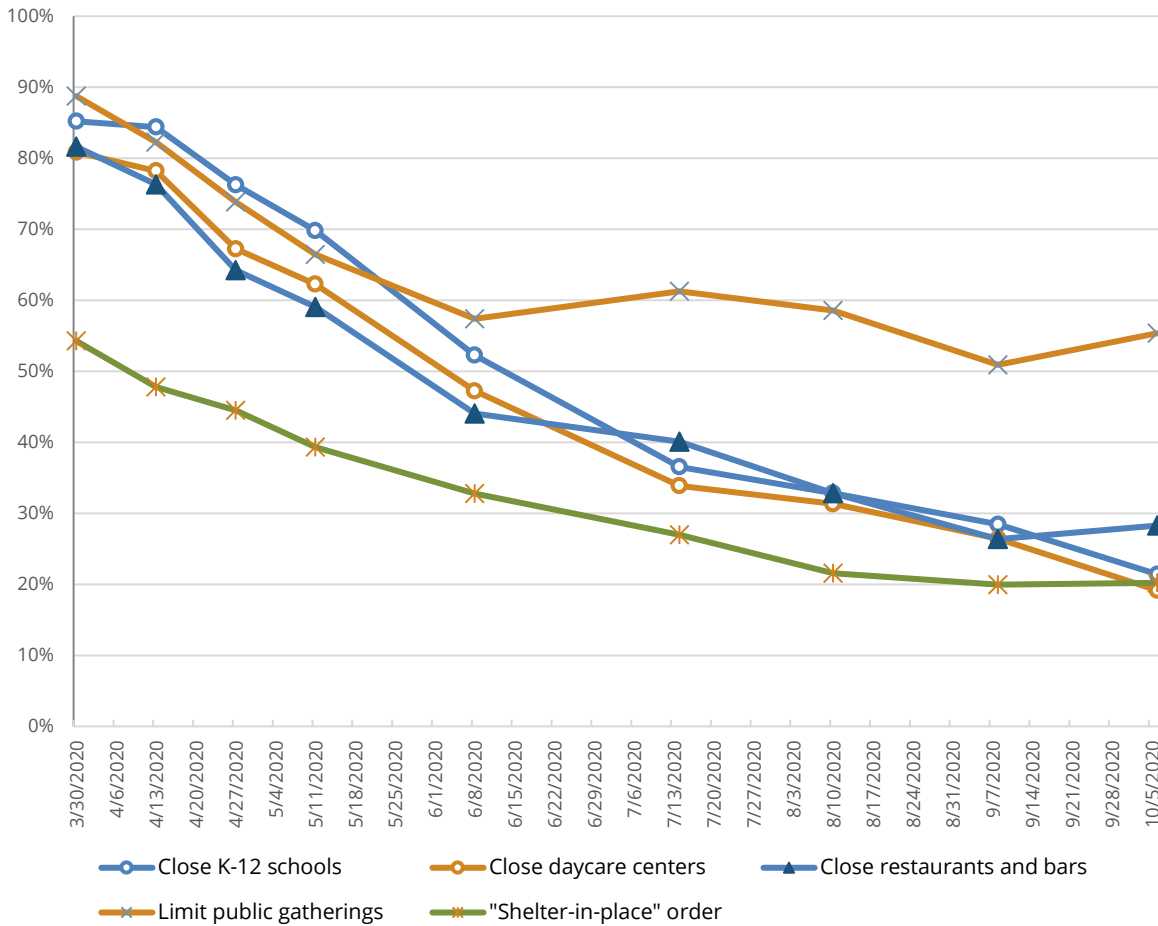


Q8 Many states have enacted policies to slow the spread of COVID-19 (coronavirus). Do you support or oppose the following decisions?

| (% Support) | 3/30 | 4/13 | 4/27 | 5/11 | 6/8 | 7/14 | 8/10 | 9/8 | 10/6 | 9/8-10/6 Change |
|----------------------------|------|------|------|------|------|------|------|------|------|-----------------|
| Close K-12 schools | 85.3 | 84.4 | 76.2 | 69.8 | 52.3 | 36.6 | 32.9 | 28.5 | 21.4 | -7.0 |
| Close daycare centers | 80.9 | 78.2 | 67.2 | 62.3 | 47.2 | 33.8 | 31.4 | 26.4 | 19.2 | -7.3 |
| Close restaurants and bars | 81.6 | 76.3 | 64.3 | 59.2 | 44.0 | 40.1 | 32.9 | 26.4 | 28.3 | +1.9 |
| Limit public gatherings | 88.6 | 82.2 | 73.9 | 66.5 | 57.3 | 61.2 | 58.6 | 51.0 | 55.4 | +4.4 |
| "Shelter-in-place" order | 54.4 | 47.8 | 44.4 | 39.3 | 32.9 | 27.0 | 21.5 | 19.9 | 20.2 | +0.2 |

Figure 7

Many states have enacted policies to slow the spread of COVID-19 (coronavirus). Do you support or oppose the following decisions? (% Support)

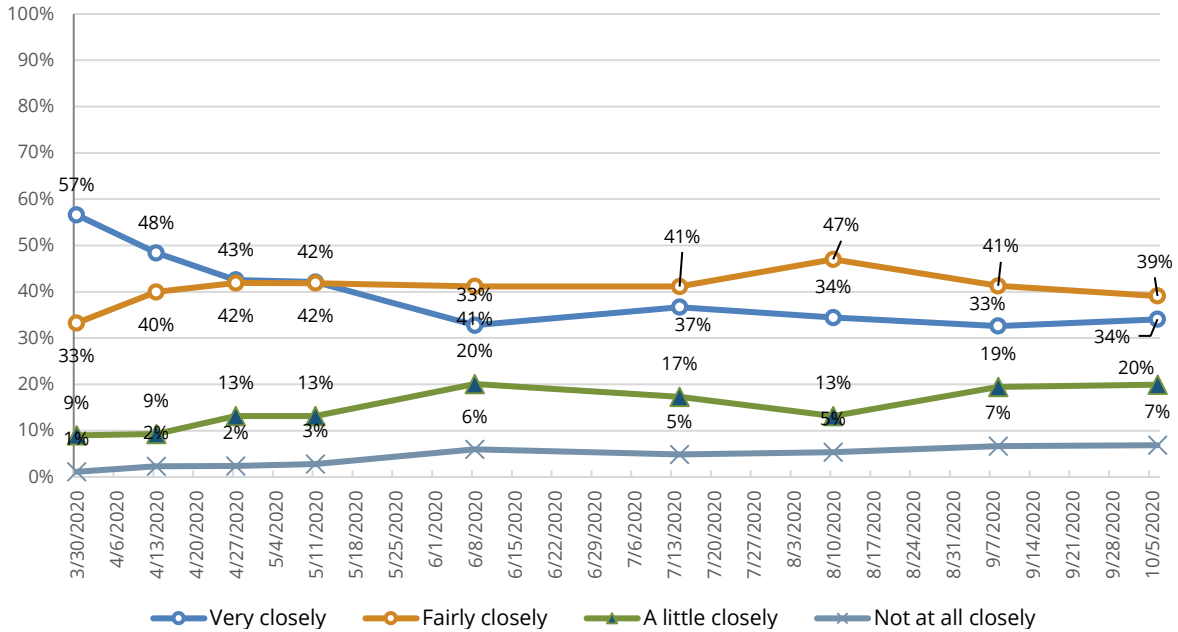


Q11 How closely are you following the news about COVID-19 (coronavirus) – if at all?

| | 3/30 | 4/13 | 4/27 | 5/11 | 6/8 | 7/14 | 8/10 | 9/8 | 10/6 | 9/8-10/6 Change |
|--------------------|-------|-------|-------|-------|-------|-------|-------|-------|-------|-----------------|
| Very closely | 56.7 | 48.3 | 42.6 | 42.1 | 32.7 | 36.7 | 34.6 | 32.5 | 34.1 | +1.5 |
| Fairly closely | 33.2 | 40.0 | 41.9 | 41.8 | 41.2 | 41.1 | 47.0 | 41.2 | 39.1 | -2.2 |
| A little closely | 9.0 | 9.4 | 13.1 | 13.2 | 20.1 | 17.3 | 13.1 | 19.5 | 20.0 | +0.5 |
| Not at all closely | 1.2 | 2.4 | 2.3 | 2.9 | 6.0 | 4.9 | 5.4 | 6.8 | 6.9 | +0.2 |
| Total | 100.0 | 100.0 | 100.0 | 100.0 | 100.0 | 100.0 | 100.0 | 100.0 | 100.0 | |

Figure 8

How closely are you following the news about COVID-19 (coronavirus) – if at all?



Q12 Are you worried that you or someone in your immediate family might catch COVID-19 (coronavirus)?

| | 3/30 | 4/13 | 4/27 | 5/11 | 6/8 | 7/14 | 8/10 | 9/8 | 10/6 | 9/8-10/6 Change |
|-------------------------|-------|-------|-------|-------|-------|-------|-------|-------|-------|--------------------|
| Very worried | 30.7 | 24.8 | 20.5 | 20.0 | 13.6 | 23.0 | 22.6 | 18.6 | 18.8 | +0.1 |
| Somewhat worried | 39.3 | 42.6 | 40.3 | 38.1 | 34.7 | 37.3 | 36.9 | 32.4 | 34.3 | +1.9 |
| Not too worried | 22.3 | 24.4 | 26.5 | 27.2 | 32.1 | 21.2 | 21.0 | 28.1 | 24.4 | -3.7 |
| Not worried at all | 6.4 | 6.9 | 11.1 | 12.9 | 17.4 | 15.6 | 15.8 | 16.9 | 14.1 | -2.7 |
| It has already happened | 1.3 | 1.3 | 1.7 | 1.8 | 2.2 | 2.9 | 3.6 | 4.1 | 8.5 | +4.4 |
| Total | 100.0 | 100.0 | 100.0 | 100.0 | 100.0 | 100.0 | 100.0 | 100.0 | 100.0 | |

Q13 Do you feel anxious about the spread of COVID-19 (coronavirus) in the United States?

| | 3/30 | 4/13 | 4/27 | 5/11 | 6/8 | 7/14 | 8/10 | 9/8 | 10/6 | 9/8-10/6 Change |
|-----------------------|-------|-------|-------|-------|-------|-------|-------|-------|-------|--------------------|
| Yes, very anxious | 22.4 | 20.9 | 18.0 | 18.8 | 11.9 | 25.2 | 24.4 | 16.4 | 18.5 | +2.2 |
| Yes, fairly anxious | 30.7 | 24.2 | 21.6 | 25.1 | 19.4 | 18.0 | 20.3 | 18.6 | 19.8 | +1.1 |
| Yes, somewhat anxious | 32.5 | 35.4 | 38.0 | 31.6 | 34.5 | 26.7 | 25.6 | 24.7 | 22.4 | -2.3 |
| No, not at all | 14.4 | 19.5 | 22.4 | 24.5 | 34.2 | 30.1 | 29.7 | 40.3 | 39.3 | -1.0 |
| Total | 100.0 | 100.0 | 100.0 | 100.0 | 100.0 | 100.0 | 100.0 | 100.0 | 100.0 | |

Q14 Do you feel anxious about the spread of COVID-19 (coronavirus) in Wyoming?

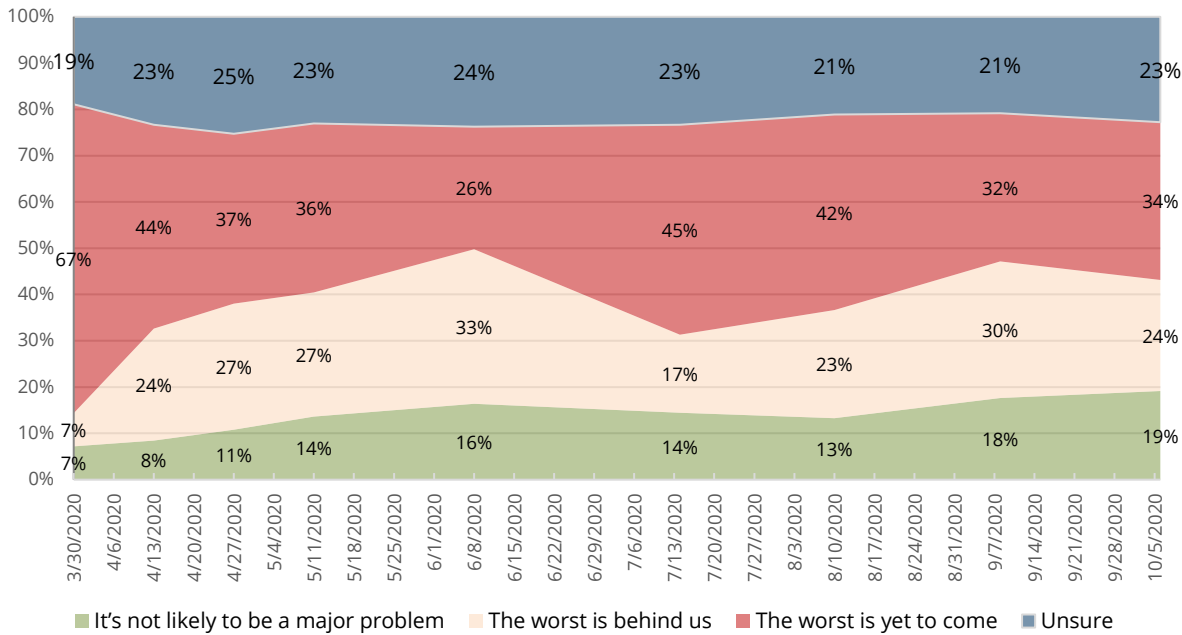
| | 3/30 | 4/13 | 4/27 | 5/11 | 6/8 | 7/14 | 8/10 | 9/8 | 10/6 | 9/8-10/6 Change |
|-----------------------|-------|-------|-------|-------|-------|-------|-------|-------|-------|--------------------|
| Yes, very anxious | 18.4 | 15.5 | 12.1 | 12.6 | 8.6 | 17.3 | 19.1 | 13.0 | 17.8 | +4.8 |
| Yes, fairly anxious | 28.2 | 21.7 | 21.1 | 22.1 | 17.1 | 18.4 | 22.6 | 17.4 | 19.6 | +2.2 |
| Yes, somewhat anxious | 36.3 | 40.0 | 37.8 | 33.2 | 33.5 | 30.4 | 22.6 | 26.0 | 20.4 | -5.7 |
| No, not at all | 17.2 | 22.8 | 28.9 | 32.1 | 40.9 | 33.9 | 35.7 | 43.5 | 42.2 | -1.3 |
| Total | 100.0 | 100.0 | 100.0 | 100.0 | 100.0 | 100.0 | 100.0 | 100.0 | 100.0 | |

Q15 Which of the following best describes your feelings about COVID-19 (coronavirus) in the United States?

| | 3/30 | 4/13 | 4/27 | 5/11 | 6/8 | 7/14 | 8/10 | 9/8 | 10/6 | 9/8-10/6 Change |
|---------------------------------------|-------|-------|-------|-------|-------|-------|-------|-------|-------|-----------------|
| It's not likely to be a major problem | 7.3 | 8.5 | 10.9 | 13.7 | 16.3 | 14.5 | 13.3 | 17.7 | 19.2 | +1.5 |
| The worst is behind us | 7.2 | 24.1 | 27.2 | 26.8 | 33.5 | 16.8 | 23.3 | 29.6 | 24.0 | -5.6 |
| The worst is yet to come | 66.7 | 44.1 | 36.7 | 36.5 | 26.5 | 45.4 | 42.3 | 31.9 | 34.1 | +2.1 |
| Unsure | 18.8 | 23.3 | 25.3 | 23.0 | 23.7 | 23.4 | 21.1 | 20.8 | 22.8 | +1.9 |
| Total | 100.0 | 100.0 | 100.0 | 100.0 | 100.0 | 100.0 | 100.0 | 100.0 | 100.0 | |

Figure 9

Which of the following best describes your feelings about COVID-19 (coronavirus) in the United States?

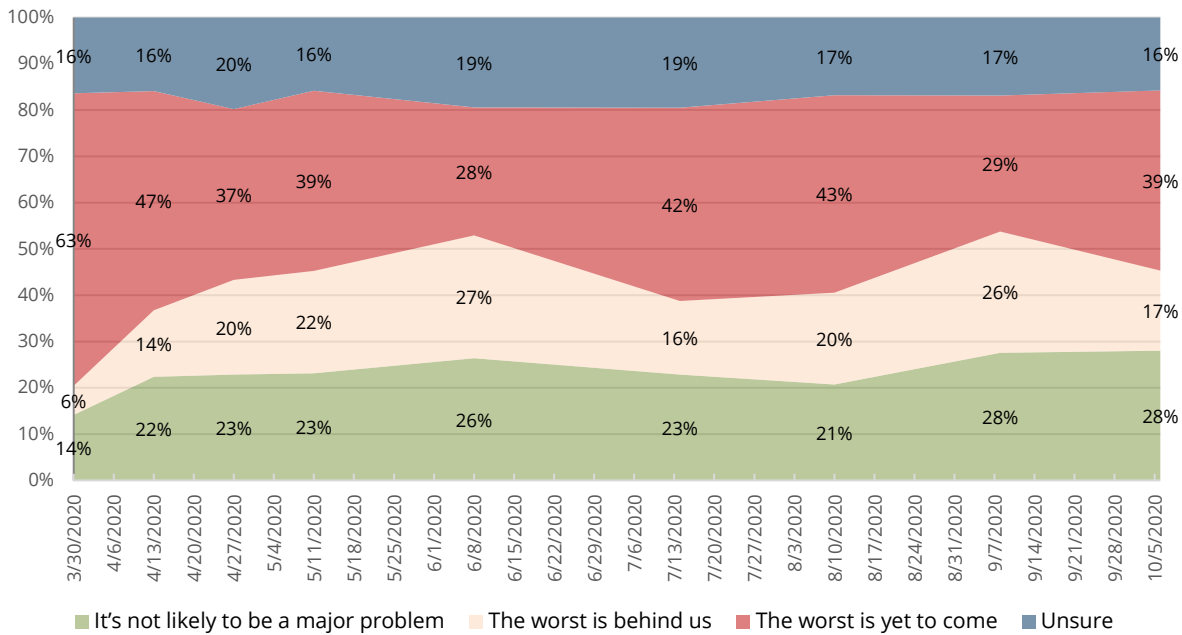


Q16 Which of the following best describes your feelings about COVID-19 (coronavirus) in Wyoming?

| | 3/30 | 4/13 | 4/27 | 5/11 | 6/8 | 7/14 | 8/10 | 9/8 | 10/6 | 9/8-10/6 Change |
|---------------------------------------|-------|-------|-------|-------|-------|-------|-------|-------|-------|-----------------|
| It's not likely to be a major problem | 14.1 | 22.3 | 22.9 | 23.2 | 26.4 | 22.9 | 20.7 | 27.6 | 28.0 | +0.4 |
| The worst is behind us | 6.2 | 14.3 | 20.4 | 22.2 | 26.6 | 15.9 | 19.9 | 26.2 | 17.3 | -8.8 |
| The worst is yet to come | 63.3 | 47.4 | 36.9 | 38.8 | 27.6 | 41.7 | 42.6 | 29.4 | 38.9 | +9.5 |
| Unsure | 16.4 | 15.9 | 19.7 | 15.9 | 19.4 | 19.5 | 16.8 | 16.8 | 15.7 | -1.1 |
| Total | 100.0 | 100.0 | 100.0 | 100.0 | 100.0 | 100.0 | 100.0 | 100.0 | 100.0 | |

Figure 10

Which of the following best describes your feelings about COVID-19 (coronavirus) in Wyoming?

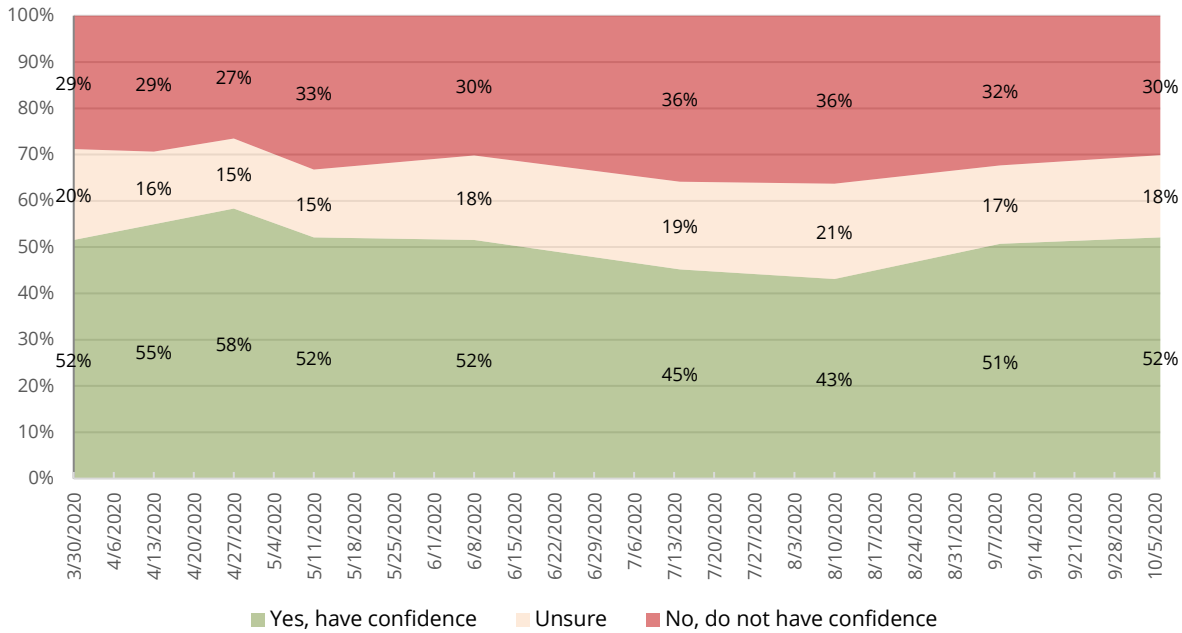


Q19 Would you say that you have confidence in the U.S. healthcare system to handle the response to COVID-19 (coronavirus), or not?

| | 3/30 | 4/13 | 4/27 | 5/11 | 6/8 | 7/14 | 8/10 | 9/8 | 10/6 | 9/8-10/6 Change |
|----------------------------|-------|-------|-------|-------|-------|-------|-------|-------|-------|-----------------|
| Yes, have confidence | 51.7 | 54.9 | 58.3 | 52.2 | 51.6 | 45.2 | 43.2 | 50.8 | 52.1 | +1.4 |
| No, do not have confidence | 28.8 | 29.4 | 26.5 | 33.2 | 30.1 | 35.8 | 36.2 | 32.3 | 30.1 | -2.2 |
| Unsure | 19.5 | 15.7 | 15.2 | 14.6 | 18.3 | 19.0 | 20.6 | 16.9 | 17.8 | +0.8 |
| Total | 100.0 | 100.0 | 100.0 | 100.0 | 100.0 | 100.0 | 100.0 | 100.0 | 100.0 | |

Figure 11

Would you say that you have confidence in the U.S. healthcare system to handle the response to COVID-19 (coronavirus), or not?

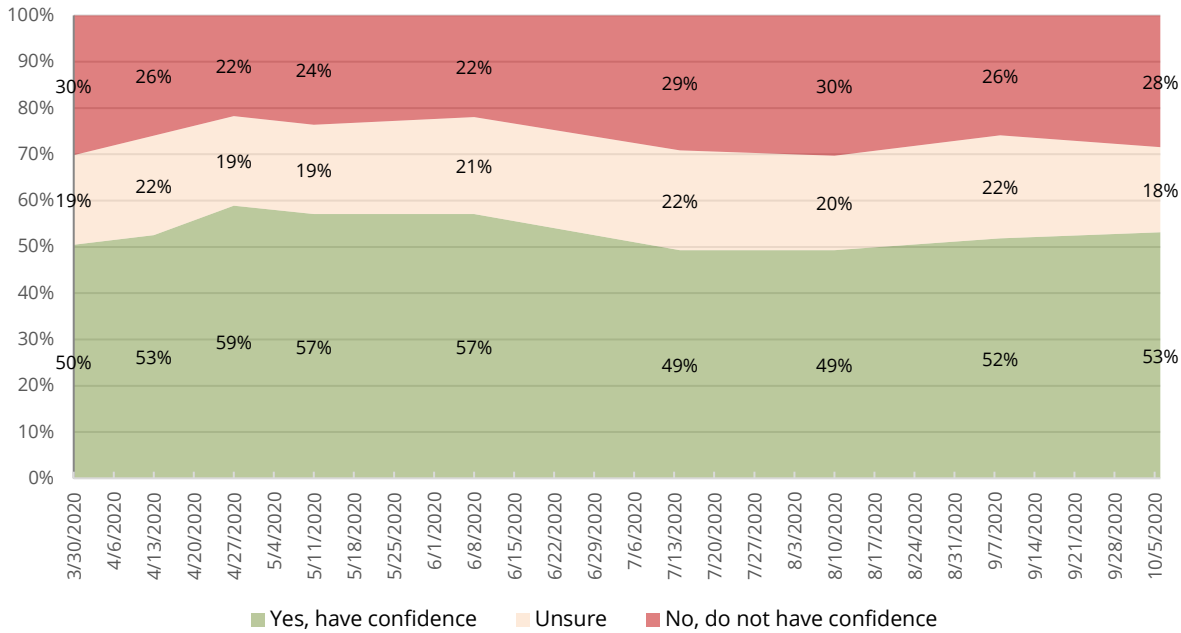


Q20 Would you say that you have confidence in the Wyoming healthcare system to handle the response to COVID-19 (coronavirus), or not?

| | 3/30 | 4/13 | 4/27 | 5/11 | 6/8 | 7/14 | 8/10 | 9/8 | 10/6 | 9/8-10/6 Change |
|----------------------------|-------|-------|-------|-------|-------|-------|-------|-------|-------|-----------------|
| Yes, have confidence | 50.4 | 52.5 | 58.9 | 57.0 | 57.2 | 49.4 | 49.3 | 51.9 | 53.1 | +1.3 |
| No, do not have confidence | 30.2 | 25.9 | 21.7 | 23.6 | 22.0 | 29.1 | 30.3 | 25.9 | 28.5 | +2.6 |
| Unsure | 19.4 | 21.6 | 19.4 | 19.3 | 20.8 | 21.5 | 20.5 | 22.2 | 18.4 | -3.9 |
| Total | 100.0 | 100.0 | 100.0 | 100.0 | 100.0 | 100.0 | 100.0 | 100.0 | 100.0 | |

Figure 12

Would you say that you have confidence in the Wyoming healthcare system to handle the response to COVID-19 (coronavirus), or not?

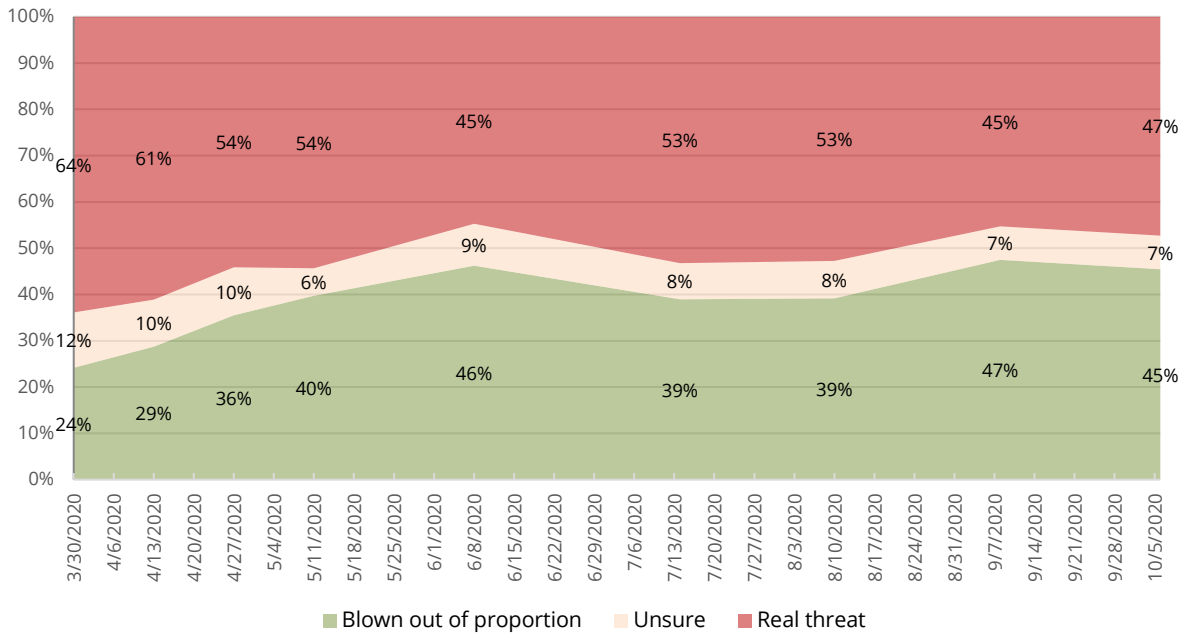


Q21 Do you think COVID-19 (coronavirus) is a real threat or blown out of proportion?

| | 3/30 | 4/13 | 4/27 | 5/11 | 6/8 | 7/14 | 8/10 | 9/8 | 10/6 | 9/8-10/6 Change |
|-------------------------|-------|-------|-------|-------|-------|-------|-------|-------|-------|-----------------|
| Real threat | 63.8 | 61.0 | 54.2 | 54.4 | 44.8 | 53.2 | 52.8 | 45.2 | 47.3 | +2.0 |
| Blown out of proportion | 24.2 | 28.8 | 35.5 | 39.7 | 46.2 | 38.9 | 39.1 | 47.4 | 45.5 | -2.0 |
| Unsure | 12.0 | 10.2 | 10.3 | 5.9 | 9.0 | 7.9 | 8.1 | 7.3 | 7.3 | +0.0 |
| Total | 100.0 | 100.0 | 100.0 | 100.0 | 100.0 | 100.0 | 100.0 | 100.0 | 100.0 | +0.0 |

Figure 13

Do you think COVID-19 (coronavirus) is a real threat or blown out of proportion?

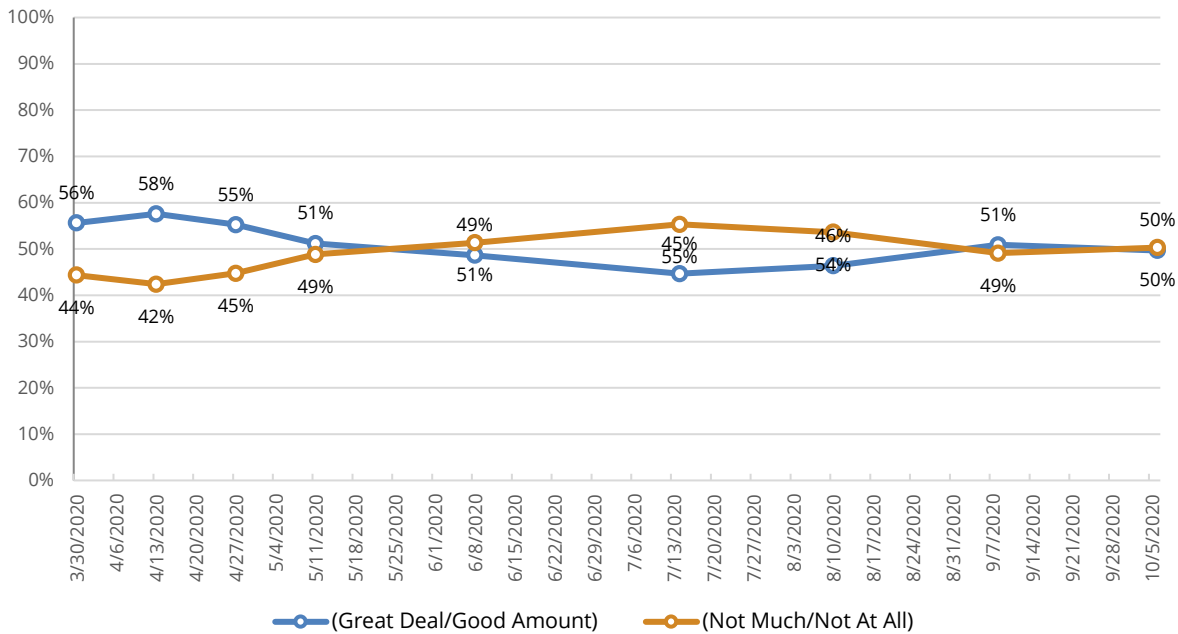


Q22 Do you trust the information you hear about COVID-19 (coronavirus) from President Donald Trump?

| | 3/30 | 4/13 | 4/27 | 5/11 | 6/8 | 7/14 | 8/10 | 9/8 | 10/6 | 9/8-10/6 Change |
|---------------|-------|-------|-------|-------|-------|-------|-------|-------|-------|-----------------|
| A great deal | 23.9 | 21.8 | 19.9 | 15.0 | 16.0 | 14.5 | 16.0 | 17.9 | 17.2 | -0.8 |
| A good amount | 31.8 | 35.8 | 35.5 | 36.3 | 32.7 | 30.2 | 30.4 | 33.0 | 32.6 | -0.3 |
| Not very much | 21.7 | 17.5 | 17.0 | 17.2 | 18.1 | 17.3 | 18.0 | 18.4 | 14.2 | -4.2 |
| Not at all | 22.6 | 24.9 | 27.6 | 31.6 | 33.2 | 38.0 | 35.6 | 30.7 | 36.0 | +5.3 |
| Total | 100.0 | 100.0 | 100.0 | 100.0 | 100.0 | 100.0 | 100.0 | 100.0 | 100.0 | |

Figure 14

Do you trust the information you hear about COVID-19 (coronavirus) from President Donald Trump?



WYOMING SURVEY & ANALYSIS CENTER

Q58 Do you trust the information you hear about COVID-19 (coronavirus) from presidential candidate Joe Biden?

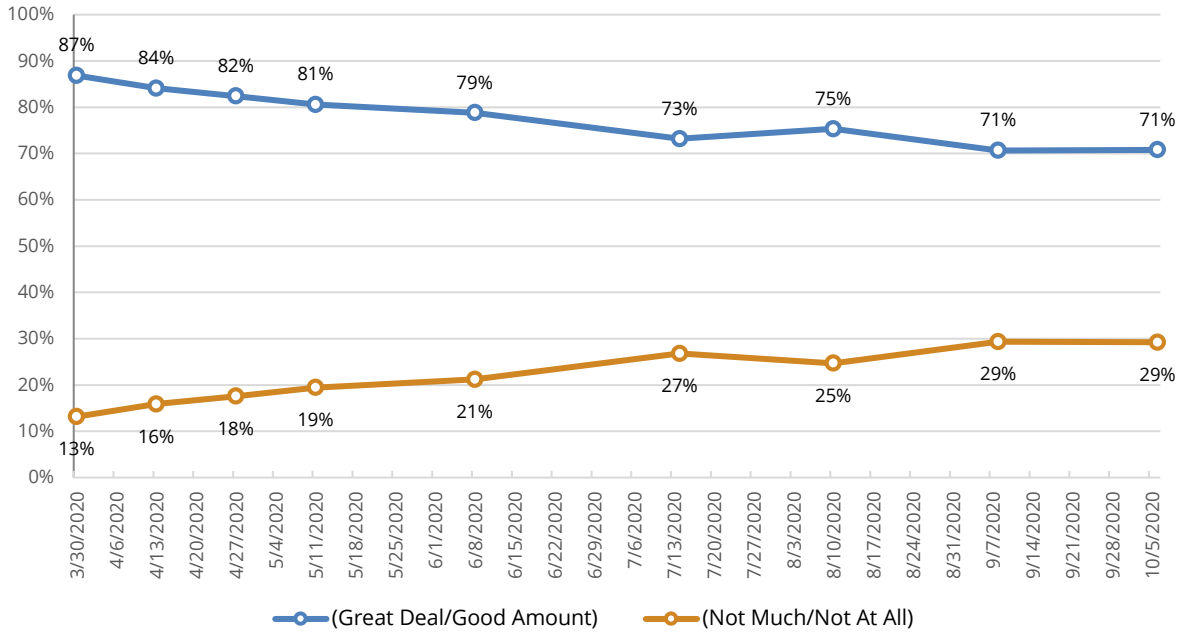
| | |
|---------------|-------|
| | 10/6 |
| A great deal | 10.8 |
| A good amount | 24.3 |
| Not very much | 27.6 |
| Not at all | 37.3 |
| Total | 100.0 |

Q23 Do you trust the information you hear about COVID-19 (coronavirus) from Governor Mark Gordon?

| | 3/30 | 4/13 | 4/27 | 5/11 | 6/8 | 7/14 | 8/10 | 9/8 | 10/6 | 9/8-10/6 Change |
|---------------|-------|-------|-------|-------|-------|-------|-------|-------|-------|-----------------|
| A great deal | 30.2 | 27.7 | 27.3 | 21.8 | 19.4 | 18.0 | 17.6 | 15.9 | 14.0 | -2.0 |
| A good amount | 56.7 | 56.4 | 55.0 | 58.7 | 59.4 | 55.2 | 57.7 | 54.7 | 56.8 | +2.1 |
| Not very much | 12.4 | 12.3 | 15.6 | 16.8 | 18.0 | 20.0 | 21.7 | 25.6 | 24.9 | -0.6 |
| Not at all | 0.8 | 3.5 | 2.0 | 2.6 | 3.2 | 6.9 | 2.9 | 3.8 | 4.3 | +0.4 |
| Total | 100.0 | 100.0 | 100.0 | 100.0 | 100.0 | 100.0 | 100.0 | 100.0 | 100.0 | |

Figure 15

Do you trust the information you hear about COVID-19 (coronavirus) from Governor Mark Gordon?

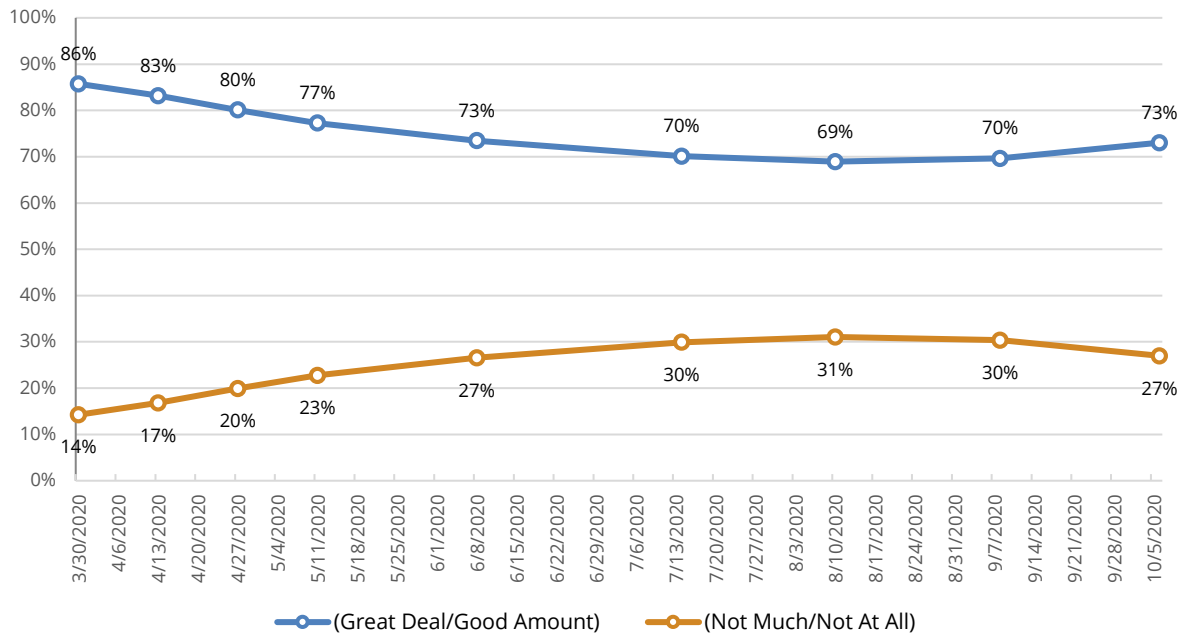


Q24 Do you trust the information you hear about COVID-19 (coronavirus) from your local government and health officials?

| | 3/30 | 4/13 | 4/27 | 5/11 | 6/8 | 7/14 | 8/10 | 9/8 | 10/6 | 9/8-10/6 Change |
|---------------|-------|-------|-------|-------|-------|-------|-------|-------|-------|-----------------|
| A great deal | 30.1 | 27.1 | 24.0 | 18.4 | 19.8 | 18.0 | 18.0 | 17.5 | 15.0 | -2.6 |
| A good amount | 55.6 | 56.0 | 56.1 | 58.8 | 53.7 | 52.1 | 50.9 | 52.0 | 58.2 | +6.3 |
| Not very much | 12.1 | 13.6 | 16.4 | 18.9 | 21.0 | 24.2 | 25.8 | 26.5 | 22.3 | -4.2 |
| Not at all | 2.2 | 3.3 | 3.6 | 3.9 | 5.5 | 5.8 | 5.2 | 4.0 | 4.5 | +0.4 |
| Total | 100.0 | 100.0 | 100.0 | 100.0 | 100.0 | 100.0 | 100.0 | 100.0 | 100.0 | |

Figure 16

Do you trust the information you hear about COVID-19 (coronavirus) from your local government and health officials?

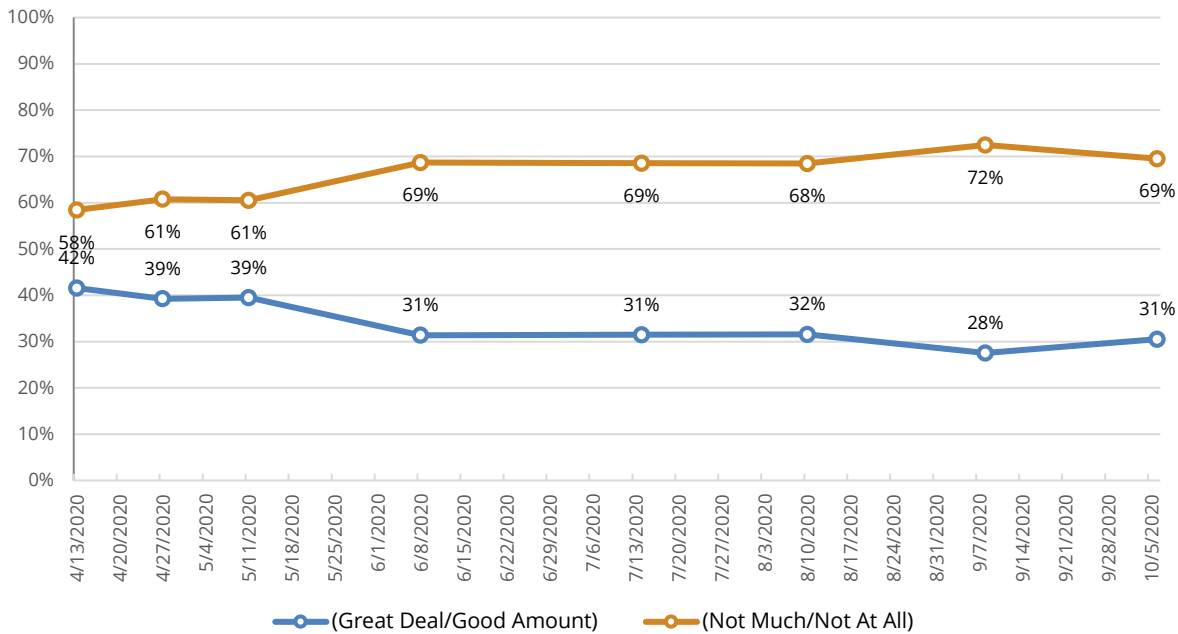


Q35 Do you trust the information you hear about COVID-19 (coronavirus) from the **national news media**?

| | 3/30 | 4/13 | 4/27 | 5/11 | 6/8 | 7/14 | 8/10 | 9/8 | 10/6 | 9/8-10/6 Change |
|---------------|------|-------|-------|-------|-------|-------|-------|-------|-------|-----------------|
| A great deal | - | 9.2 | 7.5 | 7.3 | 5.6 | 3.6 | 4.7 | 5.0 | 5.1 | -0.0 |
| A good amount | - | 32.4 | 31.8 | 32.2 | 25.8 | 27.8 | 26.9 | 22.5 | 25.5 | +3.0 |
| Not very much | - | 32.7 | 32.0 | 30.1 | 30.8 | 33.3 | 32.1 | 30.1 | 28.1 | -1.9 |
| Not at all | - | 25.7 | 28.7 | 30.3 | 37.8 | 35.2 | 36.3 | 42.4 | 41.3 | -1.1 |
| Total | - | 100.0 | 100.0 | 100.0 | 100.0 | 100.0 | 100.0 | 100.0 | 100.0 | |

Figure 17

Do you trust the information you hear about COVID-19 (coronavirus) from the national news media?



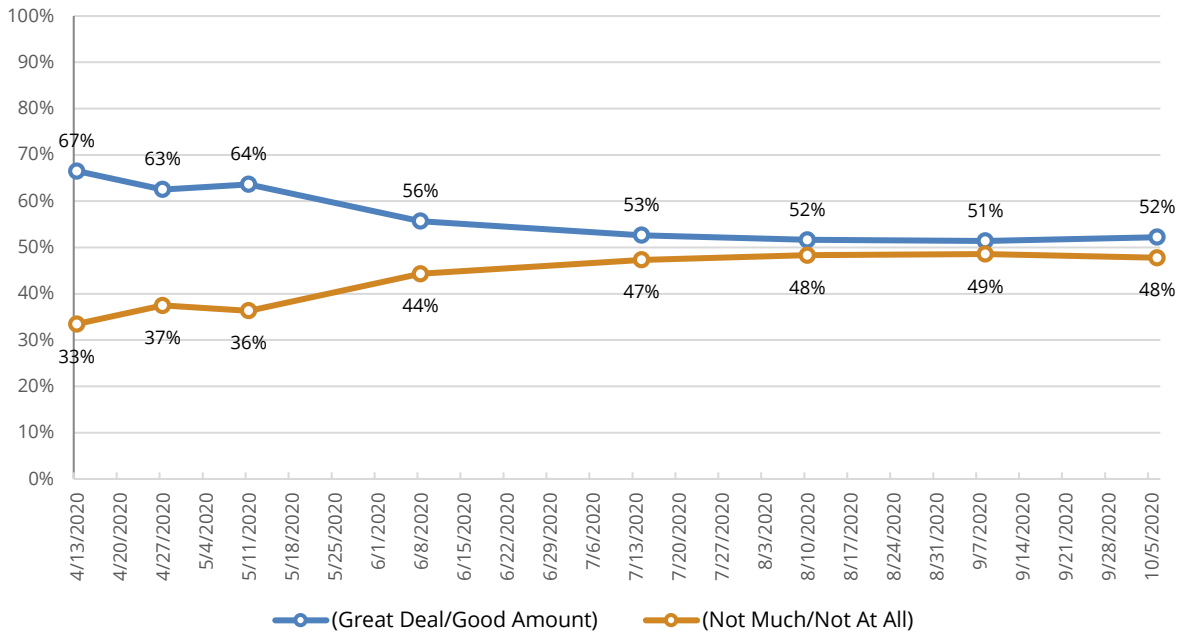
WYOMING SURVEY & ANALYSIS CENTER

Q36 Do you trust the information you hear about COVID-19 (coronavirus) from your **local news media**?

| | 3/30 | 4/13 | 4/27 | 5/11 | 6/8 | 7/14 | 8/10 | 9/8 | 10/6 | 9/8-10/6 Change |
|---------------|------|-------|-------|-------|-------|-------|-------|-------|-------|-----------------|
| A great deal | - | 10.5 | 8.9 | 6.1 | 6.9 | 4.5 | 6.3 | 5.8 | 6.1 | +0.4 |
| A good amount | - | 56.1 | 53.7 | 57.5 | 48.8 | 48.2 | 45.3 | 45.6 | 46.1 | +0.4 |
| Not very much | - | 26.3 | 26.4 | 25.6 | 32.0 | 31.1 | 34.8 | 32.6 | 32.9 | +0.3 |
| Not at all | - | 7.1 | 11.1 | 10.8 | 12.3 | 16.3 | 13.6 | 16.0 | 14.8 | -1.2 |
| Total | - | 100.0 | 100.0 | 100.0 | 100.0 | 100.0 | 100.0 | 100.0 | 100.0 | |

Figure 18

Do you trust the information you hear about COVID-19 (coronavirus) from your local news media?

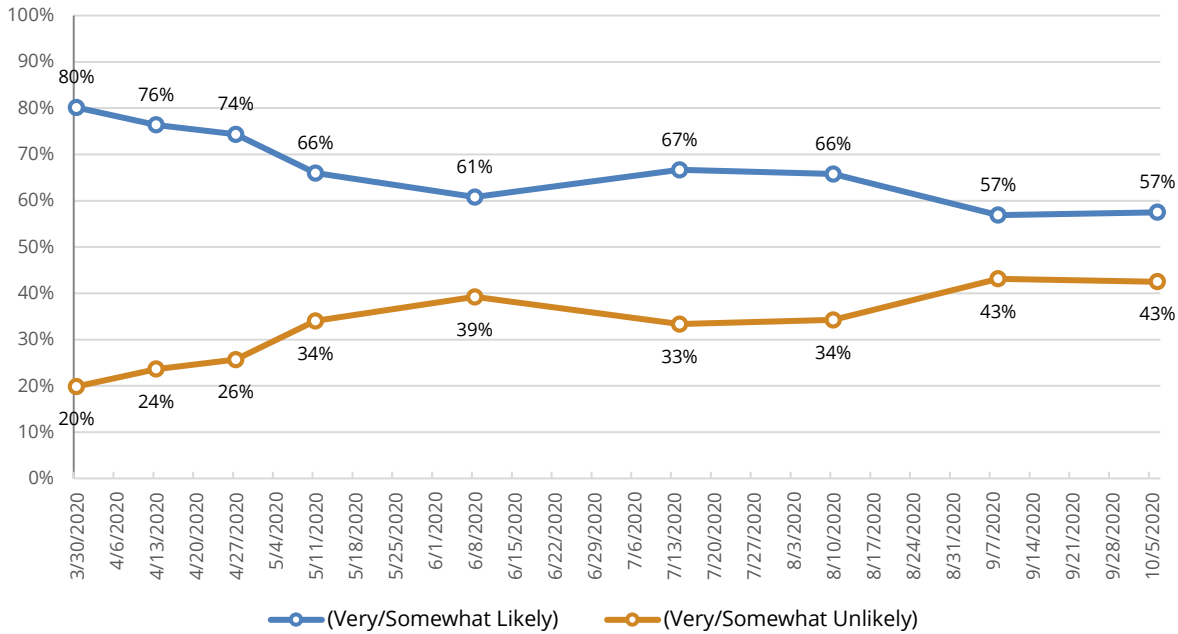


Q27 If a vaccine becomes available for COVID-19 (coronavirus), how likely are you to get the vaccine?

| | 3/30 | 4/13 | 4/27 | 5/11 | 6/8 | 7/14 | 8/10 | 9/8 | 10/6 | 9/8-10/6 Change |
|-------------------|-------|-------|-------|-------|-------|-------|-------|-------|-------|-----------------|
| Very likely | 53.6 | 56.0 | 52.4 | 48.8 | 38.1 | 48.0 | 45.7 | 32.6 | 32.3 | -0.3 |
| Somewhat likely | 26.6 | 20.4 | 21.9 | 17.0 | 22.7 | 18.6 | 20.0 | 24.3 | 25.1 | +0.8 |
| Somewhat unlikely | 9.5 | 9.0 | 7.2 | 11.5 | 12.7 | 9.9 | 10.2 | 11.3 | 11.9 | +0.6 |
| Very unlikely | 10.3 | 14.6 | 18.6 | 22.7 | 26.4 | 23.4 | 24.1 | 31.8 | 30.7 | -1.1 |
| Total | 100.0 | 100.0 | 100.0 | 100.0 | 100.0 | 100.0 | 100.0 | 100.0 | 100.0 | +0.0 |

Figure 19

If a vaccine becomes available for COVID-19 (coronavirus), how likely are you to get the vaccine?



WYOMING SURVEY & ANALYSIS CENTER

Q28 Because of the COVID-19 (coronavirus) outbreak, have you or has anyone in your immediate family been laid off or lost their job?

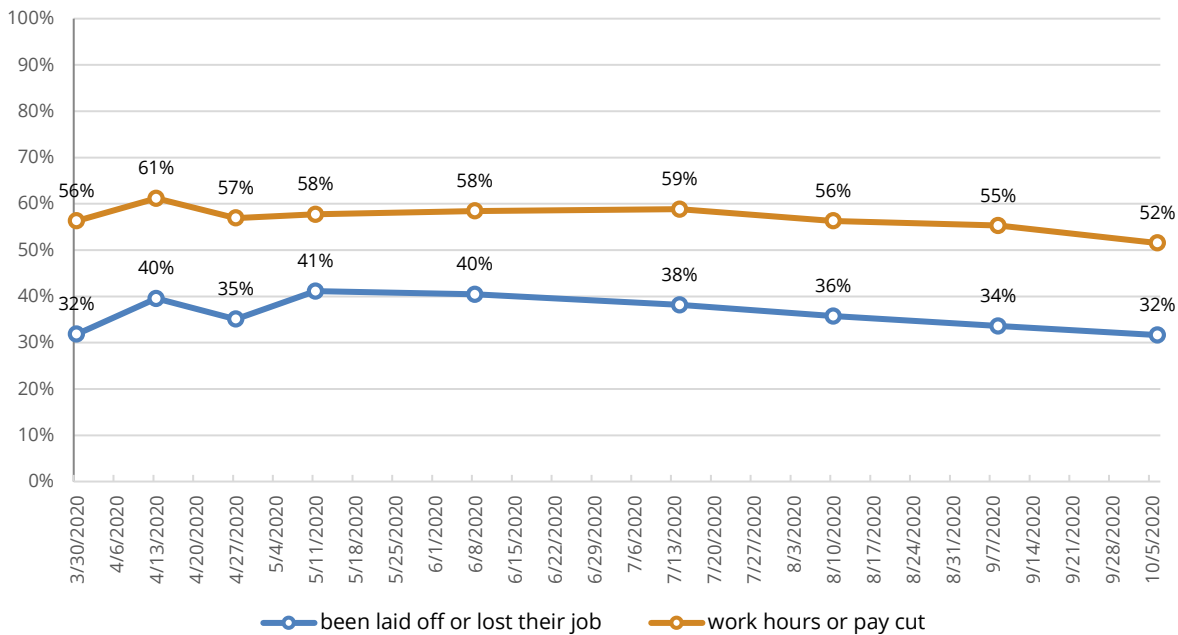
| | 3/30 | 4/13 | 4/27 | 5/11 | 6/8 | 7/14 | 8/10 | 9/8 | 10/6 | 9/8-10/6 Change |
|-------|-------|-------|-------|-------|-------|-------|-------|-------|-------|-----------------|
| Yes | 31.9 | 39.5 | 35.1 | 41.1 | 40.5 | 38.1 | 35.7 | 33.6 | 31.6 | -2.0 |
| No | 68.1 | 60.5 | 64.9 | 58.9 | 59.5 | 61.9 | 64.3 | 66.4 | 68.4 | +2.0 |
| Total | 100.0 | 100.0 | 100.0 | 100.0 | 100.0 | 100.0 | 100.0 | 100.0 | 100.0 | |

Q29 Because of the COVID-19 (coronavirus) outbreak, have you or has anyone in your immediate family had work hours or pay cut?

| | 3/30 | 4/13 | 4/27 | 5/11 | 6/8 | 7/14 | 8/10 | 9/8 | 10/6 | 9/8-10/6 Change |
|-------|-------|-------|-------|-------|-------|-------|-------|-------|-------|-----------------|
| Yes | 56.3 | 61.1 | 56.9 | 57.8 | 58.4 | 58.8 | 56.4 | 55.2 | 51.5 | -3.8 |
| No | 43.7 | 38.9 | 43.1 | 42.2 | 41.6 | 41.2 | 43.6 | 44.8 | 48.5 | +3.8 |
| Total | 100.0 | 100.0 | 100.0 | 100.0 | 100.0 | 100.0 | 100.0 | 100.0 | 100.0 | |

Figure 20

Because of the COVID-19 (coronavirus) outbreak, have you or has anyone in your immediate family... (% yes)



Q32 In the past two weeks, have you experienced difficulties purchasing any of the household items (non-food) you wanted for your home? (e.g. toilet paper, tissues, hand wash, disinfectant wipes, etc.)

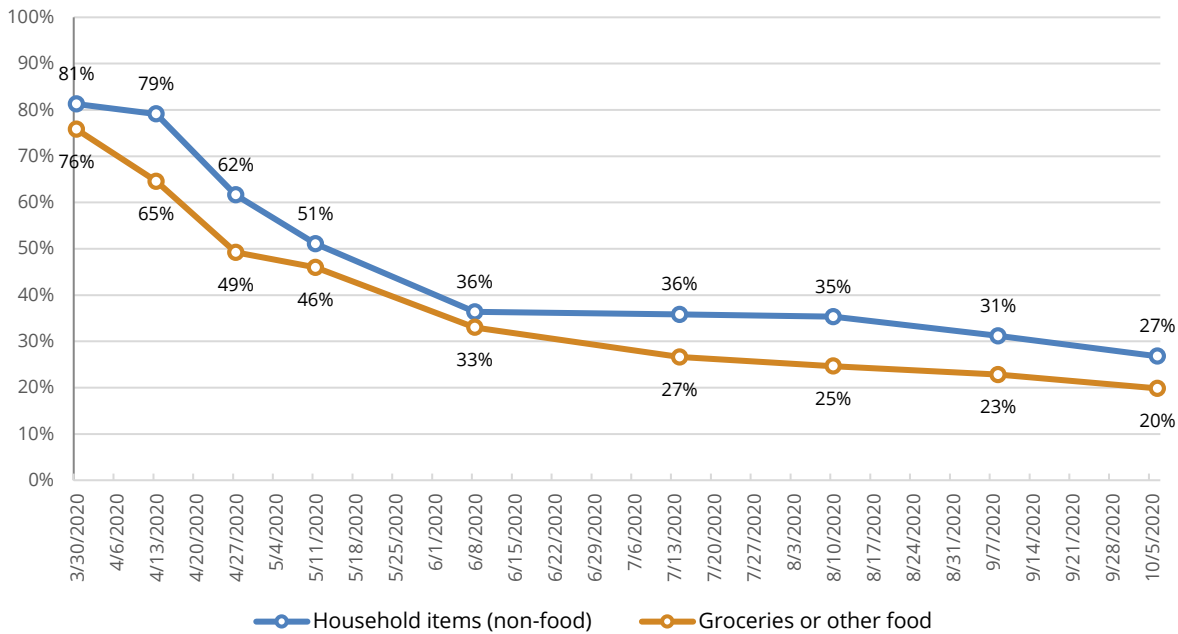
| | 3/30 | 4/13 | 4/27 | 5/11 | 6/8 | 7/14 | 8/10 | 9/8 | 10/6 | 9/8-10/6 Change |
|-------|-------|-------|-------|-------|-------|-------|-------|-------|-------|-----------------|
| Yes | 81.2 | 79.2 | 61.7 | 51.1 | 36.3 | 35.7 | 35.3 | 31.2 | 26.8 | -4.4 |
| No | 18.8 | 20.8 | 38.3 | 48.9 | 63.7 | 64.3 | 64.7 | 68.8 | 73.2 | +4.4 |
| Total | 100.0 | 100.0 | 100.0 | 100.0 | 100.0 | 100.0 | 100.0 | 100.0 | 100.0 | |

Q33 In the past two weeks, have you experienced difficulties purchasing any groceries or other food you wanted for your household? (e.g. fruits, vegetables, meats, canned goods, eggs, bread, etc.)

| | 3/30 | 4/13 | 4/27 | 5/11 | 6/8 | 7/14 | 8/10 | 9/8 | 10/6 | 9/8-10/6 Change |
|-------|-------|-------|-------|-------|-------|-------|-------|-------|-------|-----------------|
| Yes | 75.8 | 64.6 | 49.3 | 46.0 | 33.1 | 26.6 | 24.6 | 22.8 | 19.8 | -3.0 |
| No | 24.2 | 35.4 | 50.7 | 54.0 | 66.9 | 73.4 | 75.4 | 77.2 | 80.2 | +3.0 |
| Total | 100.0 | 100.0 | 100.0 | 100.0 | 100.0 | 100.0 | 100.0 | 100.0 | 100.0 | |

Figure 21

In the past two weeks, have you experienced difficulties purchasing... (% yes)

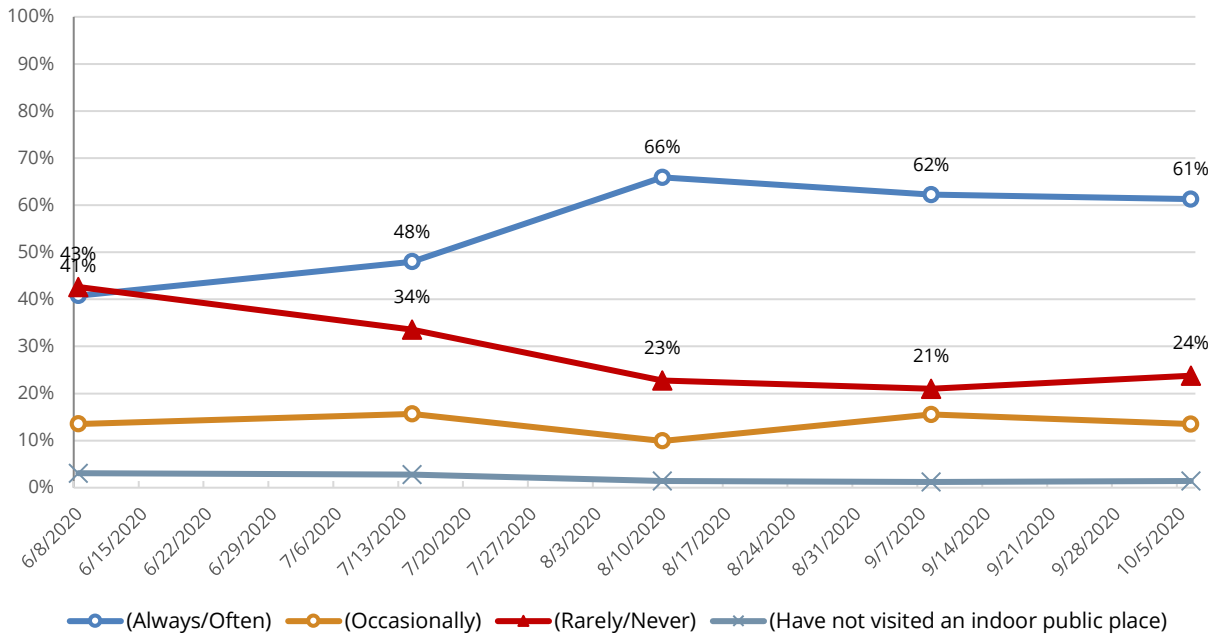


Q43 In the past two weeks when you are in an indoor public place, how often do you wear a facemask?

| | 6/8 | 7/14 | 8/10 | 9/8 | 10/6 | 9/8-10/6 Change |
|---|-------|-------|-------|-------|-------|-----------------|
| Always | 25.2 | 29.2 | 43.8 | 40.5 | 41.1 | +0.7 |
| Often | 15.6 | 18.8 | 22.0 | 21.8 | 20.2 | -1.7 |
| Occasionally | 13.6 | 15.6 | 10.0 | 15.6 | 13.5 | -2.0 |
| Rarely | 15.2 | 11.2 | 14.1 | 9.9 | 12.3 | +2.4 |
| Never | 27.5 | 22.3 | 8.7 | 11.1 | 11.5 | +0.4 |
| I have not visited an indoor public place in the last two weeks | 3.0 | 2.8 | 1.4 | 1.2 | 1.2 | -0.2 |
| Total | 100.0 | 100.0 | 100.0 | 100.0 | 100.0 | |

Figure 22

In the past two weeks when you are in an indoor public place, how often do you wear a facemask?

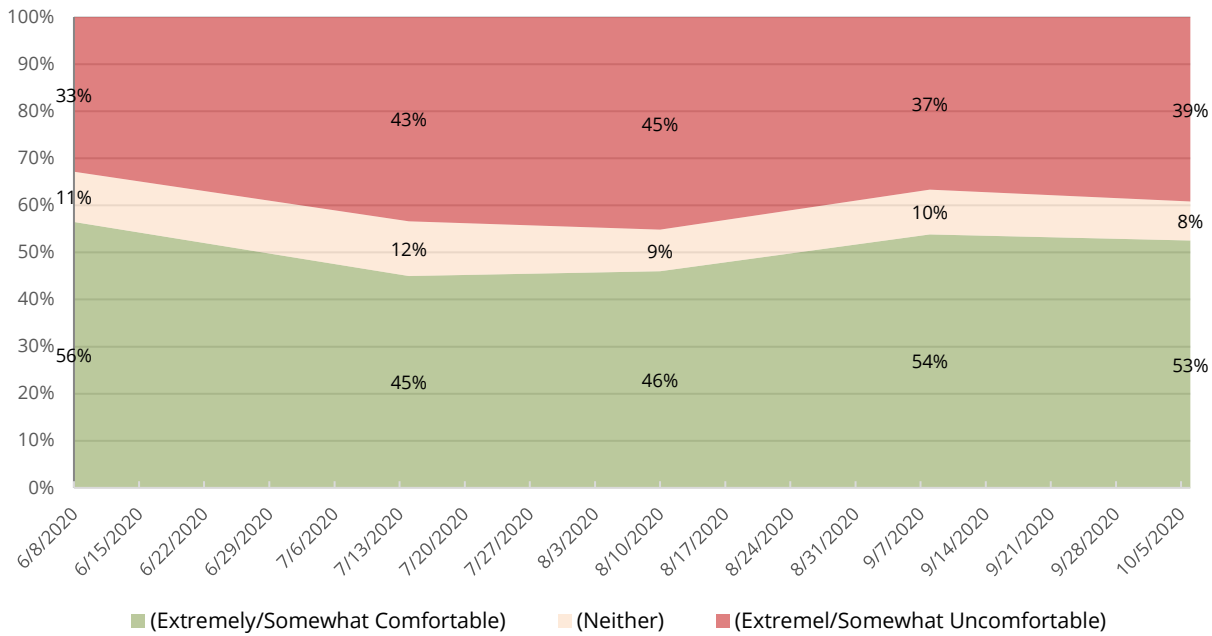


Q51 How comfortable or uncomfortable would you be attending an outdoor event in Wyoming this summer or fall with **up to 250 people**?

| | 6/8 | 7/14 | 8/10 | 9/8 | 10/6 | 9/8-10/6 Change |
|---------------------------------------|-------|-------|-------|-------|-------|-----------------|
| Extremely comfortable | 36.3 | 27.7 | 30.1 | 35.6 | 34.1 | -1.4 |
| Somewhat comfortable | 20.2 | 17.3 | 15.9 | 18.3 | 18.4 | +0.2 |
| Neither comfortable nor uncomfortable | 10.6 | 11.7 | 8.8 | 9.4 | 8.3 | -1.2 |
| Somewhat uncomfortable | 15.6 | 20.2 | 18.7 | 15.1 | 15.8 | +0.6 |
| Extremely uncomfortable | 17.2 | 23.1 | 26.5 | 21.6 | 23.4 | +1.8 |
| Total | 100.0 | 100.0 | 100.0 | 100.0 | 100.0 | |

Figure 23

How comfortable or uncomfortable would you be attending an outdoor event in Wyoming this summer or fall with up to 250 people?

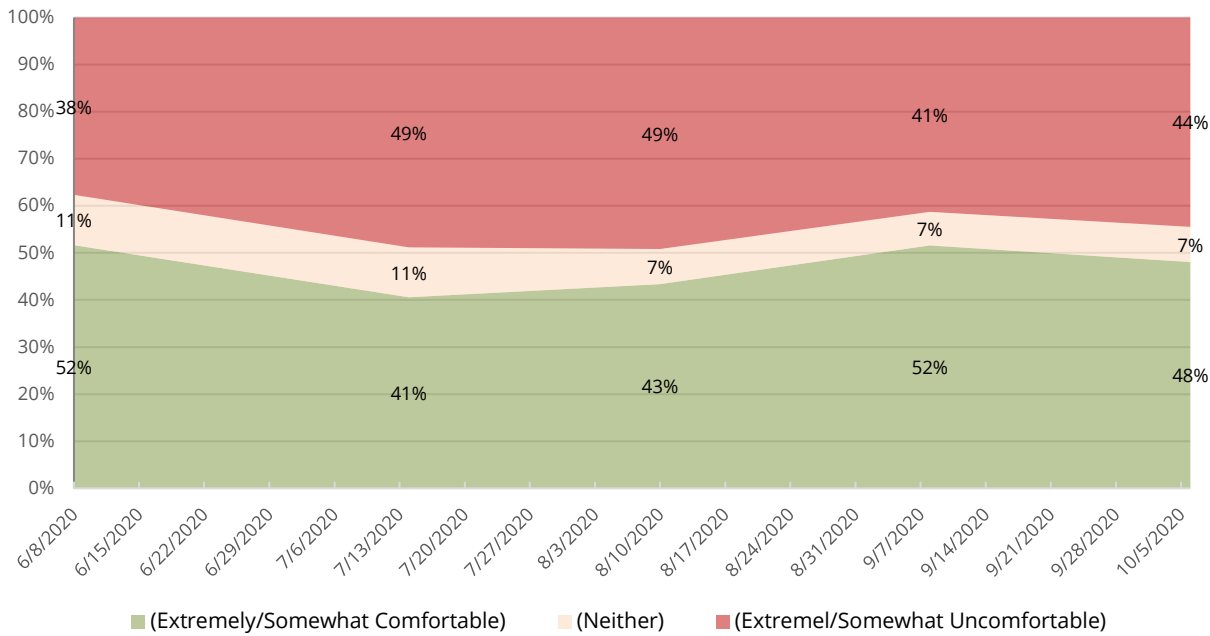


Q52 How comfortable or uncomfortable would you be attending an outdoor event in Wyoming this summer or fall with **more than 250 people**?

| | 6/8 | 7/14 | 8/10 | 9/8 | 10/6 | 9/8-10/6 Change |
|---------------------------------------|-------|-------|-------|-------|-------|-----------------|
| Extremely comfortable | 36.1 | 26.3 | 28.3 | 37.1 | 33.7 | -3.4 |
| Somewhat comfortable | 15.6 | 14.1 | 15.1 | 14.5 | 14.3 | -0.2 |
| Neither comfortable nor uncomfortable | 10.6 | 10.7 | 7.5 | 7.1 | 7.5 | +0.4 |
| Somewhat uncomfortable | 17.0 | 20.8 | 14.2 | 16.2 | 15.8 | -0.4 |
| Extremely uncomfortable | 20.8 | 28.0 | 34.9 | 25.1 | 28.7 | +3.6 |
| Total | 100.0 | 100.0 | 100.0 | 100.0 | 100.0 | |

Figure 24

How comfortable or uncomfortable would you be attending an outdoor event in Wyoming this summer or fall with more than 250 people?



**Q57 Would you be more likely or less likely to attend an outdoor event in Wyoming this summer or fall if:
Face mask use is required by all attendees**

| | 7/14 | 8/10 | 9/8 | 10/6 | 9/8-10/6 Change |
|-------------------------|-------|-------|-------|-------|--------------------|
| More likely (to attend) | 39.8 | 43.7 | 40.3 | 41.2 | +0.8 |
| The same | 25.0 | 21.8 | 22.7 | 22.9 | +0.2 |
| Less likely (to attend) | 35.2 | 34.5 | 36.9 | 35.9 | -1.0 |
| Total | 100.0 | 100.0 | 100.0 | 100.0 | |

There are special “Safe zones” or similarly designated areas where face mask use and social distancing is required and enforced

| | 7/14 | 8/10 | 9/8 | 10/6 | 9/8-10/6 Change |
|-------------------------|-------|-------|-------|-------|--------------------|
| More likely (to attend) | 30.7 | 32.2 | 28.2 | 27.4 | -0.8 |
| The same | 44.5 | 40.6 | 44.0 | 45.2 | +1.2 |
| Less likely (to attend) | 24.9 | 27.2 | 27.8 | 27.4 | -0.4 |
| Total | 100.0 | 100.0 | 100.0 | 100.0 | |

Face mask use by attendees is optional

| | 7/14 | 8/10 | 9/8 | 10/6 | 9/8-10/6 Change |
|-------------------------|-------|-------|-------|-------|--------------------|
| More likely (to attend) | 23.4 | 19.5 | 22.7 | 21.0 | -1.8 |
| The same | 37.1 | 34.6 | 38.3 | 38.9 | +0.6 |
| Less likely (to attend) | 39.5 | 46.0 | 39.0 | 40.1 | +1.2 |
| Total | 100.0 | 100.0 | 100.0 | 100.0 | |

All attendees have a temperature check upon entry

| | 7/14 | 8/10 | 9/8 | 10/6 | 9/8-10/6 Change |
|-------------------------|-------|-------|-------|-------|--------------------|
| More likely (to attend) | 37.8 | 36.6 | 33.4 | 33.5 | +0.2 |
| The same | 46.5 | 47.9 | 46.9 | 48.0 | +1.0 |
| Less likely (to attend) | 15.7 | 15.6 | 19.7 | 18.5 | -1.2 |
| Total | 100.0 | 100.0 | 100.0 | 100.0 | |

Hand sanitizing stations are available throughout the venue

| | 7/14 | 8/10 | 9/8 | 10/6 | 9/8-10/6 Change |
|-------------------------|-------|-------|-------|-------|--------------------|
| More likely (to attend) | 47.2 | 48.3 | 46.5 | 43.0 | -3.6 |
| The same | 48.8 | 47.3 | 49.4 | 53.0 | +3.6 |
| Less likely (to attend) | 4.0 | 4.3 | 4.2 | 4.1 | +0.0 |
| Total | 100.0 | 100.0 | 100.0 | 100.0 | |

Social distancing rules for attendees are enforced everywhere at the event

| | 7/14 | 8/10 | 9/8 | 10/6 | 9/8-10/6 Change |
|-------------------------|-------|-------|-------|-------|--------------------|
| More likely (to attend) | 41.7 | 42.2 | 41.2 | 38.7 | -2.6 |
| The same | 34.6 | 30.7 | 30.0 | 29.4 | -0.6 |
| Less likely (to attend) | 23.7 | 27.1 | 28.8 | 31.9 | +3.1 |
| Total | 100.0 | 100.0 | 100.0 | 100.0 | |

There are no social distancing rules for attendees

| | 7/14 | 8/10 | 9/8 | 10/6 | 9/8-10/6 Change |
|-------------------------|-------|-------|-------|-------|--------------------|
| More likely (to attend) | 14.5 | 14.0 | 17.1 | 21.1 | +4.0 |
| The same | 32.4 | 32.2 | 35.0 | 30.5 | -4.4 |
| Less likely (to attend) | 53.1 | 53.8 | 47.9 | 48.4 | +0.4 |
| Total | 100.0 | 100.0 | 100.0 | 100.0 | |

Maximum occupancy/attendee numbers are enforced to promote social distancing

| | 7/14 | 8/10 | 9/8 | 10/6 | 9/8-10/6 Change |
|-------------------------|-------|-------|-------|-------|--------------------|
| More likely (to attend) | 43.7 | 42.0 | 40.5 | 41.5 | +0.9 |
| The same | 39.3 | 40.0 | 38.3 | 38.6 | +0.3 |
| Less likely (to attend) | 17.0 | 18.0 | 21.1 | 19.9 | -1.3 |
| Total | 100.0 | 100.0 | 100.0 | 100.0 | |

Q53 How strongly would you support or oppose an ordinance that required people in your community to wear a face mask when visiting **indoor public places**?

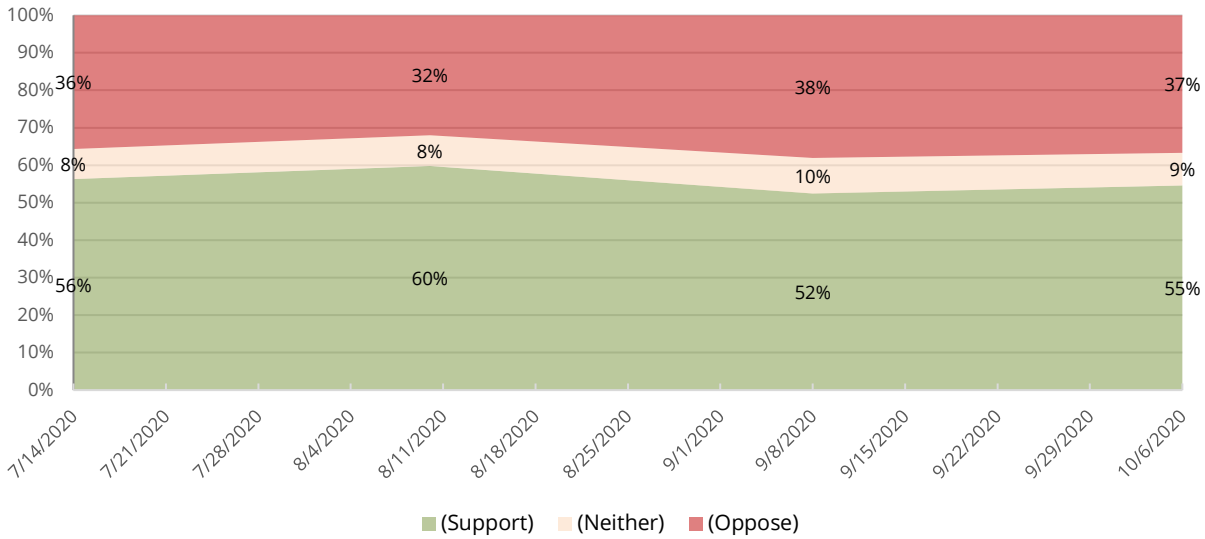
| | 7/14 | 8/10 | 9/8 | 10/6 | 9/8-10/6 Change |
|----------------------------|-------|-------|-------|-------|--------------------|
| Strongly support | 42.7 | 47.0 | 40.4 | 42.8 | +2.3 |
| Somewhat support | 13.7 | 12.8 | 12.0 | 11.9 | -0.0 |
| Neither support nor oppose | 7.9 | 8.2 | 9.5 | 8.7 | -0.8 |
| Somewhat oppose | 10.7 | 8.7 | 10.6 | 10.9 | +0.4 |
| Strongly oppose | 25.0 | 23.4 | 27.5 | 25.7 | -1.9 |
| Total | 100.0 | 100.0 | 100.0 | 100.0 | |

Q54 How strongly would you support or oppose an ordinance that required people in your community to wear a face mask when visiting **outdoor public places**?

| | 7/14 | 8/10 | 9/8 | 10/6 | 9/8-10/6 Change |
|----------------------------|-------|-------|-------|-------|--------------------|
| Strongly support | 18.7 | 20.8 | 17.4 | 18.6 | +1.2 |
| Somewhat support | 16.0 | 19.4 | 16.7 | 16.8 | +0.0 |
| Neither support nor oppose | 9.5 | 8.8 | 7.3 | 10.9 | +3.6 |
| Somewhat oppose | 15.7 | 13.1 | 12.4 | 12.1 | -0.2 |
| Strongly oppose | 40.1 | 37.9 | 46.1 | 41.6 | -4.5 |
| Total | 100.0 | 100.0 | 100.0 | 100.0 | |

Figure 25

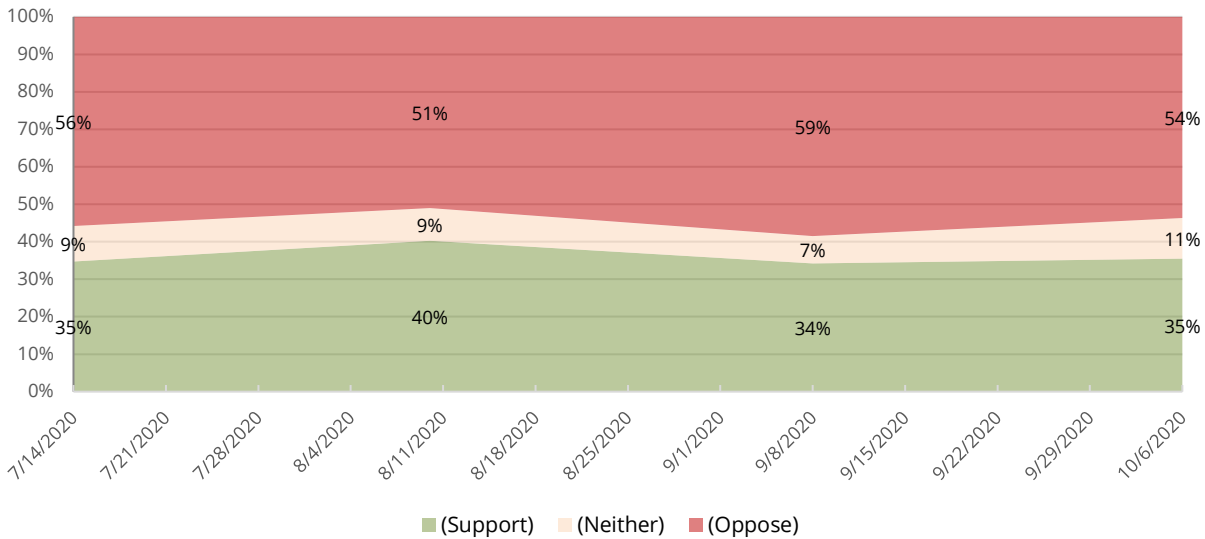
*How strongly would you support or oppose an ordinance that required people in your community to wear a facemask when visiting **indoor** public places?*



WYOMING SURVEY & ANALYSIS CENTER

Figure 26

*How strongly would you support or oppose an ordinance that required people in your community to wear a facemask when visiting **outdoor** public places?*



WYOMING SURVEY & ANALYSIS CENTER

Demographics

Age

| | Unweighted | Weighted | Wyoming |
|-------|------------|----------|---------|
| 18-24 | 7.7 | 12.2 | 12.6 |
| 25-34 | 16.6 | 18.0 | 18.3 |
| 35-44 | 16.6 | 16.1 | 16.0 |
| 45-54 | 17.0 | 16.1 | 15.9 |
| 55-64 | 20.0 | 18.3 | 18.2 |
| 65-74 | 12.9 | 11.5 | 11.3 |
| 75+ | 9.1 | 7.8 | 7.6 |
| Total | 100.0 | 100.0 | 100.0 |

Gender

| | Unweighted | Weighted | Wyoming |
|--------|------------|----------|---------|
| Male | 46.4 | 50.4 | 50.9 |
| Female | 53.6 | 49.6 | 49.1 |
| Total | 100.0 | 100.0 | 100.0 |

County

| | Unweighted | Weighted | Wyoming |
|-------------|------------|----------|---------|
| Albany | 9.1 | 6.9 | 6.6 |
| Big Horn | 2.8 | 2.1 | 2.1 |
| Campbell | 3.2 | 6.5 | 8.0 |
| Carbon | 3.8 | 2.7 | 2.6 |
| Converse | 2.8 | 2.4 | 2.4 |
| Crook | 2.0 | 1.3 | 1.3 |
| Fremont | 4.6 | 6.8 | 6.9 |
| Goshen | 2.2 | 2.4 | 2.3 |
| Hot Springs | 1.2 | 0.9 | 0.8 |
| Johnson | 1.4 | 1.5 | 1.5 |
| Laramie | 17.4 | 17.3 | 17.0 |
| Lincoln | 2.6 | 3.4 | 3.3 |
| Natrona | 14.3 | 14.0 | 13.7 |
| Niobrara | 0.8 | 0.5 | 0.4 |
| Park | 7.1 | 5.2 | 5.1 |
| Platte | 1.6 | 1.5 | 1.5 |
| Sheridan | 5.0 | 5.3 | 5.2 |
| Sublette | 2.4 | 1.7 | 1.7 |
| Sweetwater | 6.5 | 7.5 | 7.5 |
| Teton | 4.0 | 4.1 | 4.0 |
| Uinta | 2.2 | 3.4 | 3.5 |
| Washakie | 2.0 | 1.4 | 1.4 |
| Weston | 1.4 | 1.2 | 1.2 |
| Total | 100.0 | 100.0 | 100.0 |