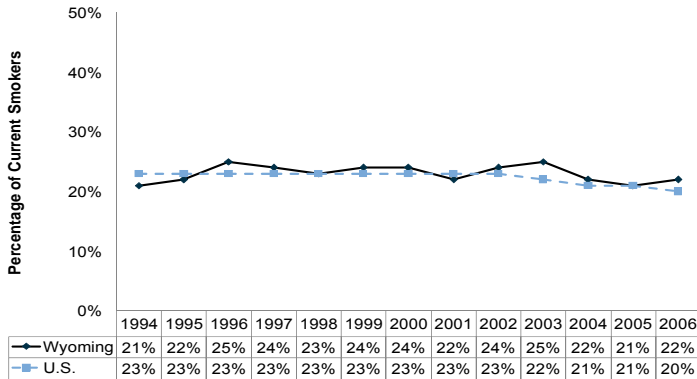


FACT SHEET

Wyoming Smoking Rates Remain Constant

Smoking rates for Wyoming and the United States have remained constant (between 20% and 25%) from 1994 to 2006.^{1,2} In 2006, in Wyoming, 21% of males and 22% of females were smokers.²

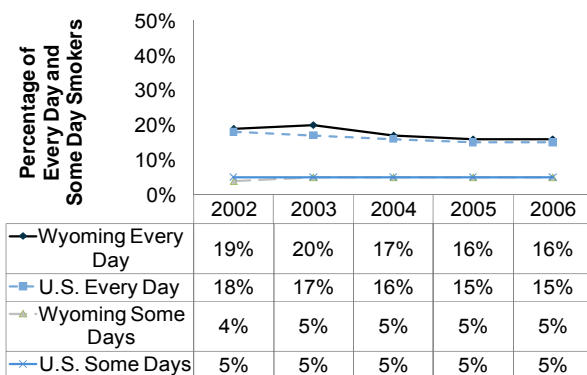
Percentage of Current Smokers in Wyoming and in the United States, 1994–2006^{1,2*}



Every day Smokers Outnumber Occasional Smokers

In Wyoming, the percentage of *every day* smokers decreased slightly between 2002 and 2006 (from 19% to 16%), while the percentage of *some day* smokers remained stable at approximately 5%.² Wyoming's percentages of *every day* and *some day* smokers are similar to national percentages for the same time period.¹

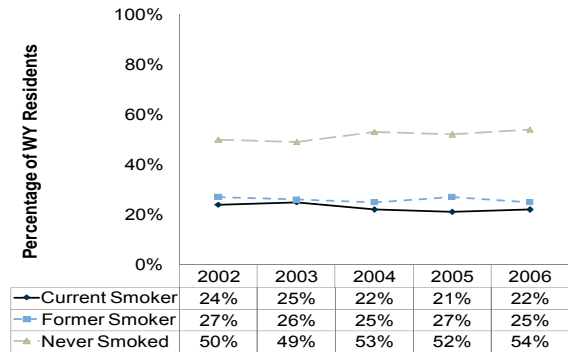
Smoking Frequency of Wyoming and U.S. Smokers, 2002–2006^{1,2†}



Those Who Have Never Smoked in the Majority

In both the U.S. and Wyoming, those who have never smoked outnumber former and current smokers combined. In 2006, 20% of U.S. respondents were current smokers, 25% were former smokers, and 55% had never smoked.¹ In 2006, in Wyoming, former smokers (25%) outnumbered current smokers (22%), and those who had never smoked (54%) outnumbered both.²

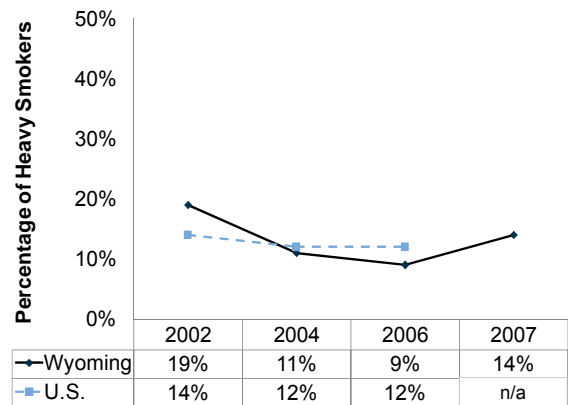
Smoking Status of Wyoming Residents, 2002–2006^{2‡}



Percentage of Heavy Smokers Declining

The percentage of heavy smokers (i.e., smokers consuming more than 25 cigarettes a day) declined in Wyoming from 19% in 2002 to 14% in 2007.³ In 2006, about 14% of U.S. smokers smoked more than 25 cigarettes per day.^{4§}

Percentage of Heavy Smokers in Wyoming and the United States, 2002–2007^{3,4§}



* Current smokers are those who reported smoking at least 100 cigarettes in their lifetime and currently smoke every day or some days.

† Of respondents who reported smoking 100 cigarettes or more in their lifetime.

‡ Percentages do not total 100% because of rounding.

§ Data from 2007 for the U.S. are not yet available.

WYSAC Fact Sheet: Adult Cigarette Use
Corresponding to WYSAC Issue Brief #2008-08
Produced for the Wyoming Dept. of Health
March 2008



Wyoming Survey & Analysis Center

University of Wyoming • Department 3925
1000 E. University Ave. • Laramie, WY 82071
(307) 766-2189 • e-mail: wysac@uwyo.edu

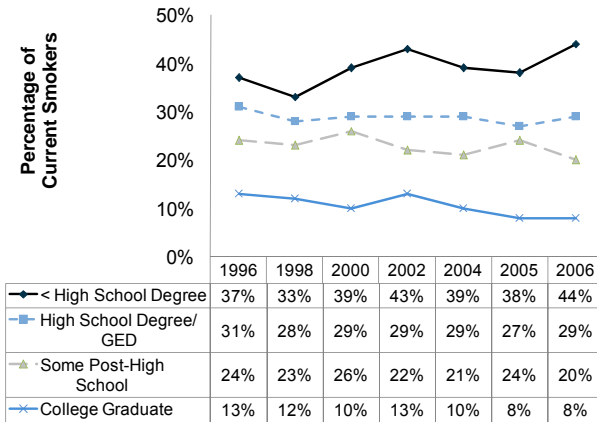
www.uwyo.edu/wysac

FACT SHEET cont.

People with Less Education More Likely to Smoke

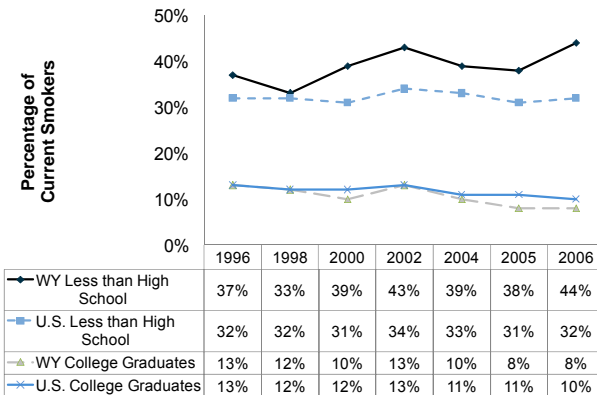
- Smoking prevalence among Wyoming residents with less than a high school diploma is relatively high (44% in 2006).²
- Smoking prevalence among Wyoming residents who are college graduates is relatively low (8% in 2006).²

Percentage of Current Smokers in Wyoming, by Education Level, 1996–2006²



Similar disparities exist on a national level.¹ However, the difference among education groups is somewhat greater in Wyoming than in the United States as a whole. For example, the 36 percentage point difference between Wyoming's smoking prevalence of 44%² for those with less than a high school education and of 8% for those with a college degree is significantly greater than the 22 percentage point difference between the U.S. percentages of 32% and 10%, respectively.¹

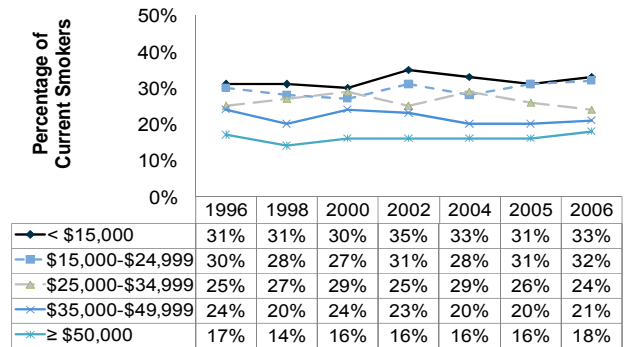
Percentage of Current Smokers with Less than a High School Degree vs. College Graduates in Wyoming and in the United States, 1996–2006^{1,2}



People with Lower Income More Likely to Smoke

- Smoking prevalence among Wyoming residents earning less than \$15,000 annually is relatively high (33% in 2006).²
- Smoking prevalence among Wyoming residents earning more than \$50,000 annually is relatively low (18% in 2006).²

Percentage of Current Smokers in Wyoming by Income, 1996–2006²

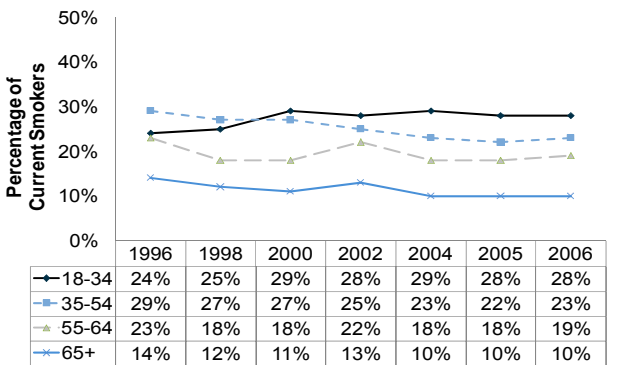


Similar disparities exist on a national level. In 2006, in the U.S., 28% of people earning \$15,000 or less annually were smokers, but only 13% of those earning more than \$50,000 annually were smokers.¹

Younger People More Likely to Smoke

- Since 2004, the Wyoming smoking prevalence for those between 35 and 54 years of age has remained stable at around 23%.²
- Wyoming smoking prevalence for those between 18 and 34 years of age (the youngest age group surveyed) rose to 29% in 2000 and has remained stable, since then, at around 28%.²

Percentage of Current Smokers in Wyoming, by Age, 1996–2006²



WYSAC Fact Sheet: Adult Cigarette Use

Corresponding to WYSAC Issue Brief #2008-08
March 2008



Wyoming Survey & Analysis Center

University of Wyoming • Department 3925
1000 E. University Ave. • Laramie, WY 82071
(307) 766-2189 • e-mail: wysac@uwyo.edu

1. Behavioral Risk Factor Surveillance System [Interactive Database 1994-2006]. (2006). Atlanta, GA: Centers for Disease Control and Prevention. Retrieved December 17, 2007, from <http://www.cdc.gov/brfss>
2. Wyoming Behavioral Risk Factor Surveillance System [Interactive Database 1994-2006]. (2006). Cheyenne, WY: Wyoming Department of Health. Retrieved January 9, 2008, from <http://wdh.state.wy.us/brfss/brfssdata.aspx>
3. Adult Tobacco Survey [Merged Data File 2002, 2004, 2006, 2007]. (2007). Laramie, WY: Wyoming Survey & Analysis Center, University of Wyoming.
4. Centers for Disease Control and Prevention. (2007). Percentage distribution of adult current cigarette smokers, by number of cigarettes smoked per day, and percentage of adult current cigarette smokers who smoked >25 cigarettes per day, by sex, race, Hispanic origin, age, and education. Retrieved October 22, 2007, from http://www.cdc.gov/tobacco/data_statistics/tables/adult/table_4.htm

Adult Cigarette Use