

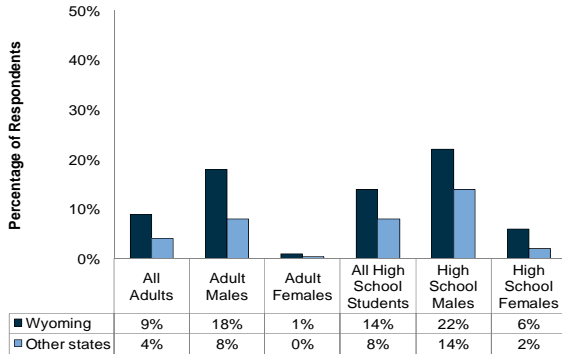
# FACT SHEET

# Wyoming Smokeless Tobacco Use

## Wyoming Smokeless Tobacco Use Rates Higher than in Other States<sup>\*†</sup>

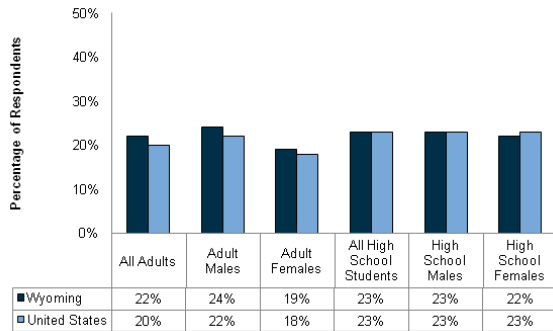
For every age group for which comparisons are available, smokeless tobacco use in Wyoming is higher than in other states.<sup>1,2,3,4</sup>

### Wyoming and U.S. Smokeless Tobacco Use Rates<sup>1,2,3,4</sup>



In contrast, cigarette use in Wyoming is roughly similar to the nation as a whole.<sup>1,2,3,4</sup>

### Wyoming and U.S. Cigarette Smoking Rates, 2006<sup>1,2,3,4</sup>

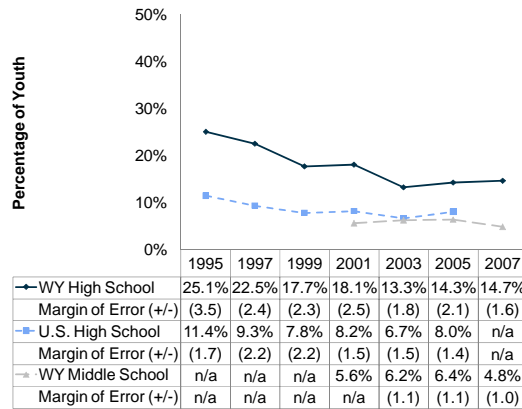


Youth smokeless tobacco use rates in Wyoming decreased between 1995 and 2007, but have remained relatively stable since 2001.<sup>3</sup>

- In 2004, the percentage of Wyoming high school students who used smokeless tobacco in the past 30 days (14%) was higher than the U.S. average (8%).<sup>3,4</sup>

Since 2001, the overall prevalence for smokeless tobacco use among Wyoming middle school students has hovered around 6%. This rate is close to the 2005 prevalence of smokeless tobacco use among U.S. high school students (8%).<sup>3,4</sup>

### Percentage of Wyoming and U.S. Youth Who Used Smokeless Tobacco in the Past 30 Days, 1995–2007<sup>3,4</sup>



In 2005, the percentages of male (22%) and female (6%) Wyoming high school students who used smokeless tobacco were each higher than the national averages (6% and 2%, respectively).<sup>3,4</sup>

\*Only thirteen states included an optional set of questions concerning smokeless tobacco use on the 2004 Behavioral Risk Factor Surveillance System (BRFSS). The Centers for Disease Control and Prevention (CDC) removed the questions from the BRFSS after 2004; however, the WY BRFSS continues to ask these questions. Throughout this fact sheet, we compare 2004 data for Wyoming to the 2004 data for the other states that included the optional set of smokeless tobacco questions on their 2004 BRFSS. We also report the 2006 Wyoming percentages, even though we have no national comparisons in 2006. Because different states asked the optional questions concerning smokeless tobacco in any given year, between 1998 and 2004, we cannot make a valid trend analysis for states other than Wyoming.<sup>1,2</sup>

†National data from the 2007 Youth Risk Behavior Surveillance System (YRBSS) will not be available until June 2008. Therefore, we report data through 2007 for the WY YRBS and data through 2005 for the national YRBSS. Further, only four states in 2005 asked middle school students about their smokeless tobacco use. A sample this small is not likely to reflect national prevalence, so we report no national data for middle school students.<sup>3,4</sup>

## WYSAC Fact Sheet: Wyoming Smokeless Tobacco Use

Corresponding to WYSAC Issue Brief #2008-11  
Produced for the Wyoming Dept. of Health  
April 2008



### Wyoming Survey & Analysis Center

University of Wyoming • Department 3925  
1000 E. University Ave. • Laramie, WY 82071  
(307) 766-2189 • e-mail: [wysac@uwyo.edu](mailto:wysac@uwyo.edu)

[www.uwyo.edu/wysac](http://www.uwyo.edu/wysac)

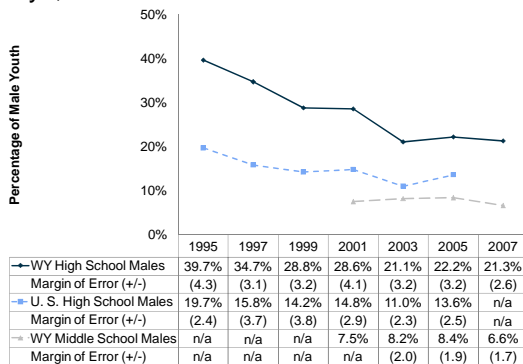
# FACT SHEET cont.

## Male Youth More Likely to Use<sup>†</sup>

Male youth are more likely to use smokeless tobacco than female youth.<sup>3,4</sup>

- Among Wyoming *male high school* students, smokeless tobacco use rates decreased from 40% in 1995 to 21% in 2007.<sup>3</sup>
- These rates have remained relatively stable since 2003.<sup>3</sup>
- In 2005, the Wyoming rate was approximately eight percentage points above the national average.<sup>3,4</sup>
- The smokeless tobacco use rate among Wyoming *male middle school* students has hovered around 7% since 2001.<sup>3</sup>

Percentage of Wyoming and U.S. *Male Youth* Who Used Smokeless Tobacco in the Past 30 Days, 1995–2007<sup>3,4</sup>



## Wyoming Adult Smokeless Tobacco Use Rates Higher than in Other States\*

- Adult smokeless tobacco use in Wyoming has been stable during the past decade.<sup>2</sup>
- The percentage of Wyoming adult males who used smokeless tobacco in 2004 was almost two times the median of other states (15% vs. 8%).<sup>1,2</sup>
- The percentage of Wyoming adult females who used smokeless tobacco in 2004 was more than two times the median of other states (1% vs. 0.4%).<sup>1,2</sup>

### WYSAC Fact Sheet: Wyoming Smokeless Tobacco Use

Corresponding to WYSAC Issue Brief #2008-11  
Produced for the Wyoming Dept. of Health  
April 2008



#### Wyoming Survey & Analysis Center

University of Wyoming • Department 3925  
1000 E. University Ave. • Laramie, WY 82071  
(307) 766-2189 • e-mail: [wysac@uwyo.edu](mailto:wysac@uwyo.edu)  
[www.uwyo.edu/wysac](http://www.uwyo.edu/wysac)

## Cessation

Wyoming tobacco users indicated that healthcare professionals are much less likely to ask about smokeless tobacco use than about smoking.<sup>5</sup>

- 76% of respondents reported that they were asked if they smoked, whereas 32% were asked if they used smokeless tobacco.<sup>5</sup>
- A greater percentage of respondents were asked by a healthcare professional if they used smokeless tobacco in 2007 (32%) than in 2004 (28%) or 2002 (24%).<sup>5</sup>

The Wyoming Quit Tobacco Program (WQTP) assists enrollees in their efforts to quit using tobacco products.<sup>6</sup>

- WQTP Enrollees differ in their quit rate and use of program components based on whether they enrolled to quit smokeless tobacco or to quit smoking.<sup>6</sup>

Differences among Those Who Enrolled in WQTP for Smokeless Tobacco and Those Who Enrolled in WQTP for Smoking<sup>6</sup>

	Percentage of those who enrolled to get help with quitting smokeless tobacco	Percentage of those who enrolled to get help with quitting smoking
Reported being quit	59%	46%
Used prescription medications	34%	54%
Used over-the-counter medications (NRT; i.e., patch, gum, lozenge)	72%	60%
Used nicotine gum	46%	31%
Used lozenges	32%	23%
Used at least one WQTP component (i.e., Quitline, Quitnet, NRT, etc.)	78%	87%

1. Behavioral Risk Factor Surveillance System National Medians [Data file]. (2004). Laramie, WY: Wyoming Survey & Analysis Center, University of Wyoming. Received from Menlo Futa, BRFSS Coordinator at the Wyoming Department of Health, on September 5, 2006.
2. Wyoming Behavioral Risk Factor Surveillance System [Interactive Database 1994–2006]. (2006). Cheyenne, WY: Wyoming Department of Health. Retrieved January 9, 2008, from <http://wdh.state.wy.us/brfss/brfssdata.aspx>
3. Wyoming Youth Risk Behavior Survey. [Data File 2001, 2003, 2005, 2007]. (2007). Cheyenne, WY: Wyoming Department of Education. Retrieved December 6, 2007, from <http://www.k12.wy.us/HS/yrebs/yrebs.asp>
4. Youth Risk Behavior Surveillance System. [Data File 1991–2005]. (2005). Atlanta, GA: Centers for Disease Control and Prevention. Retrieved December 14, 2007, from <http://www.cdc.gov/HealthyYouth/yrebs/index.htm>
5. Adult Tobacco Survey [Merged Data File 2002, 2004, 2006, 2007]. (2007). Laramie, WY: Wyoming Survey & Analysis Center, University of Wyoming.
6. Wyoming Quit Tobacco Program [Cumulative Data File June 2005–December 2007]. (2007). Laramie, WY: Wyoming Survey & Analysis Center, University of Wyoming.